

TECHNICAL DRAWINGS

IZO.
PANEL

contents

Technical drawings

1.1. IzoWall wall sandwich panel with visible fastening	3
1.2. IzoWall wall sandwich panel with visible fastening	4
2. IzoGold wall sandwich panel with hidden fastening	5
4.1 IzoRoof roof sandwich panel	7
4.2 IzoRoof roof sandwich panel	8
4.3 Detail of the panel connection	9
5. IzoWall fastening to the structure	10
6. IzoGold fastening to the structure	11
7. IzoWall fastening to the structure	12
8. IzoGold fastening to the structure	13
9. Corner joint	14
10. Fastening panels to reinforced concrete column	15
11. Ground beam joint	16
12. Ground beam joint	17
13. Ground beam joint	18
14. Partition wall	19
15. Joining panels lengthwise	20
16. Sliding joint	21
17. Fastening to the structure with lateral panel joint	22
18. Roof ridge	23
19. Eaves with optional snow guards fastening	24
20. Top wall panel joining element	25
21. Joint of top wall panel protruding over the roof	26
22. Roof edge next to higher building's wall	27
23. Joint of brick wall protruding over the roof	28
24. Joint of higher edge of a monopitched roof	29
25. Tidge skylight	30
26. Strip skylight	31
27. Roof penetration	32
28. Roof maintenance systems	33
29. Internal gutter at the joint of roof panels	34
30. Joining panels with gate's edge - flashings	35
31. Joining panels with window's edge	36
32. Use of sandwich panel with one-side steel lining	37
33. Sandwich panels - assembly to wall (masonry of rainf. concrete)	38
34. Assembly of additional elevation on existing panels	39
35. Joint of cold storage panels with concrete and PVC corner	40
36. Fastening cold storage panels with the use of LAX fasteners	41
37. Joint of external wall or ceiling with partition wall	42
38. Fastening cold storage panels in the corner	43
39. HILTI system	44
40. Omega profile	45
41. Suspending panels with the use of LAX system fasteners	46

PIR-N

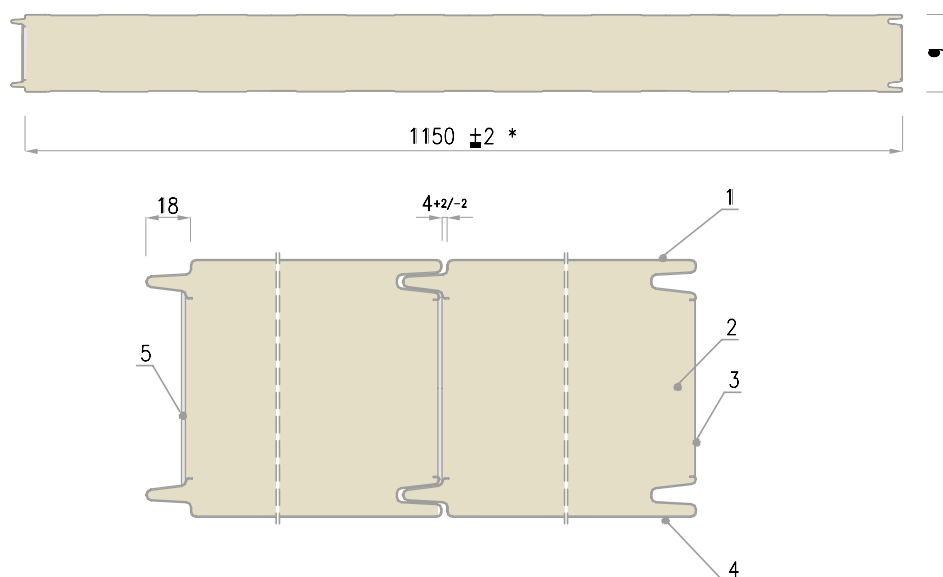
1.1. IzoWall WALL SANDWICH PANEL WITH VISIBLE FASTENING

PIR-F

Polyurethane/polyisocyanurate foam core

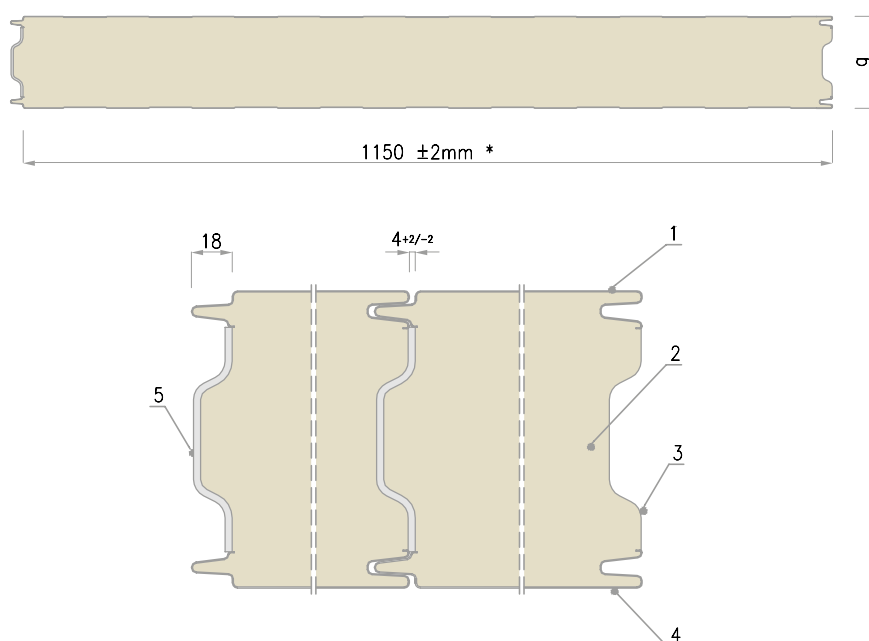
VARIANT 1

Thickness 120mm to 200 mm - STRAIGHT EDGE



VARIANT 2

Thickness 120mm to 200 mm - SIDE EDGE WITH LABYRINTH JOINT



1. Steel lining, external, standard gauge 0,50 - 0,60mm
2. Polyurethane / polyisocyanurate foam core
3. Protection strip preventing diffusion and water infiltration
4. Steel lining, internal, standard gauge 0,40 - 050mm
5. Factory-applied soft seal on side edge from the male lock side

*1150mm — standard modular width of the panel

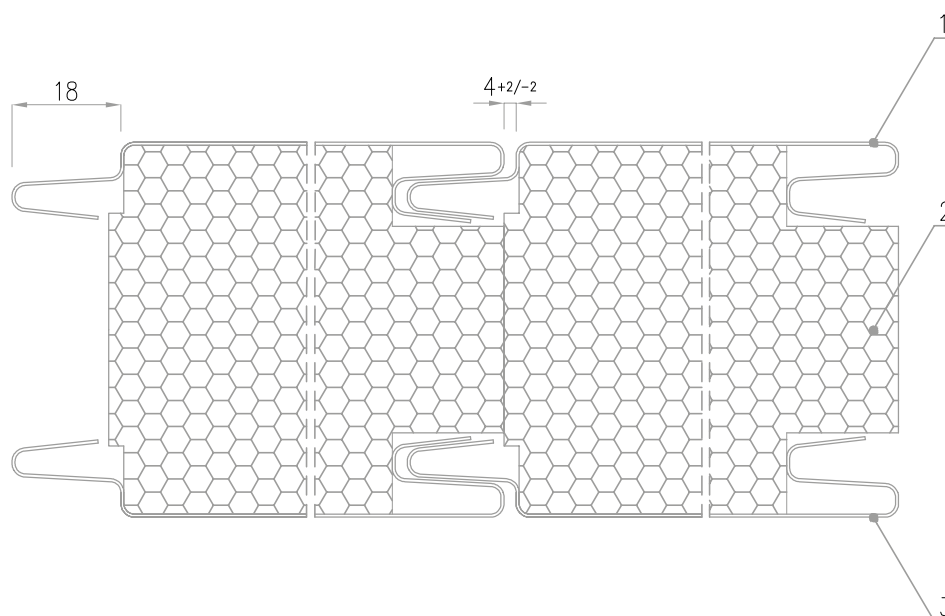
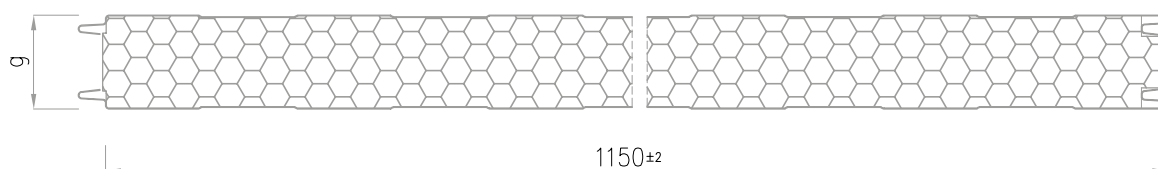
1000mm, 1080mm, 1200mm — modular widths available on request

MWF

1.2. IzoWall WALL SANDWICH PANEL WITH VISIBLE FASTENING

EPS

Mineral wool core (MWF) or expanded polystyrene (EPS)



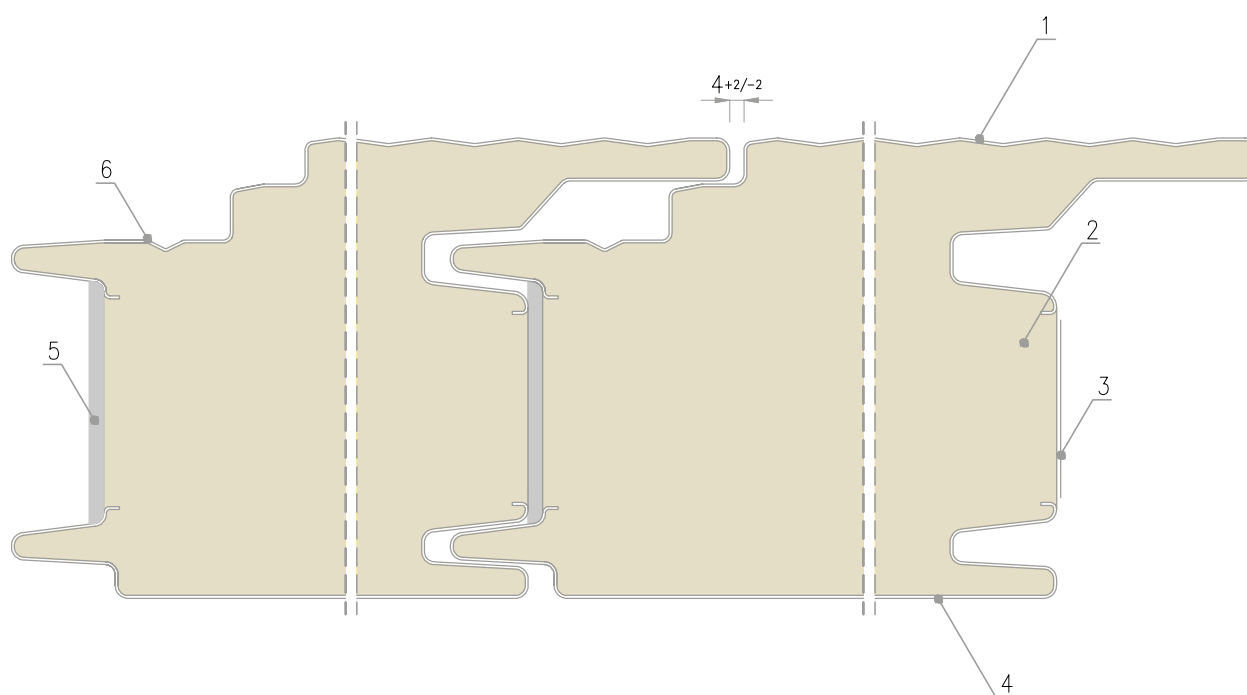
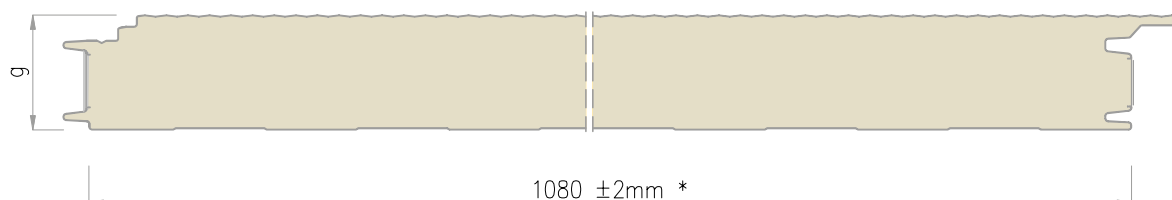
1. Steel lining - external, standard gauge 0,40-0,50mm(EPS), 0.50-0.60 mm(MWF)
2. Mineral wool(MWF) or expanded polystyren(EPS) core
3. Steel lining - internal, standard gauge 0.50 - 0.60 mm

PIR-N

PIR-F

2. IzoGold WALL SANDWICH PANEL WITH HIDDEN FASTENING

Polyurethane/polyisocyanurate foam core



1. Steel lining, external, standard gauge 0.50-0.60 mm
2. Polyurethane / polyisocyanurate foam core
3. Protection strip preventing diffusion and water infiltration
4. Steel lining, internal, standard gauge 0.40-0.50 mm
5. Polyurethane seal
6. Fastening screw slot

* 1080 mm - standard modular width of the panel

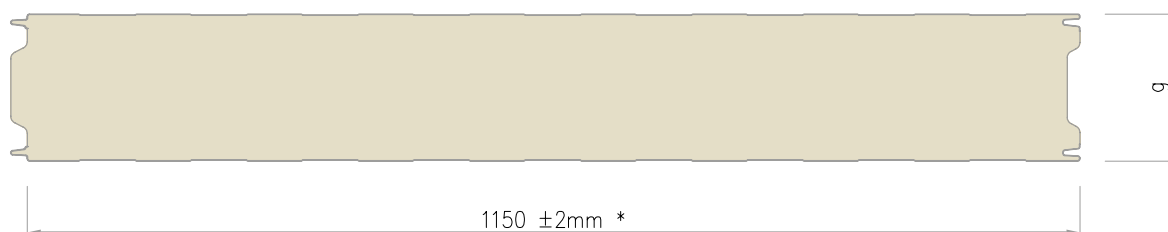
1000mm - modular width available on request

PIR-N

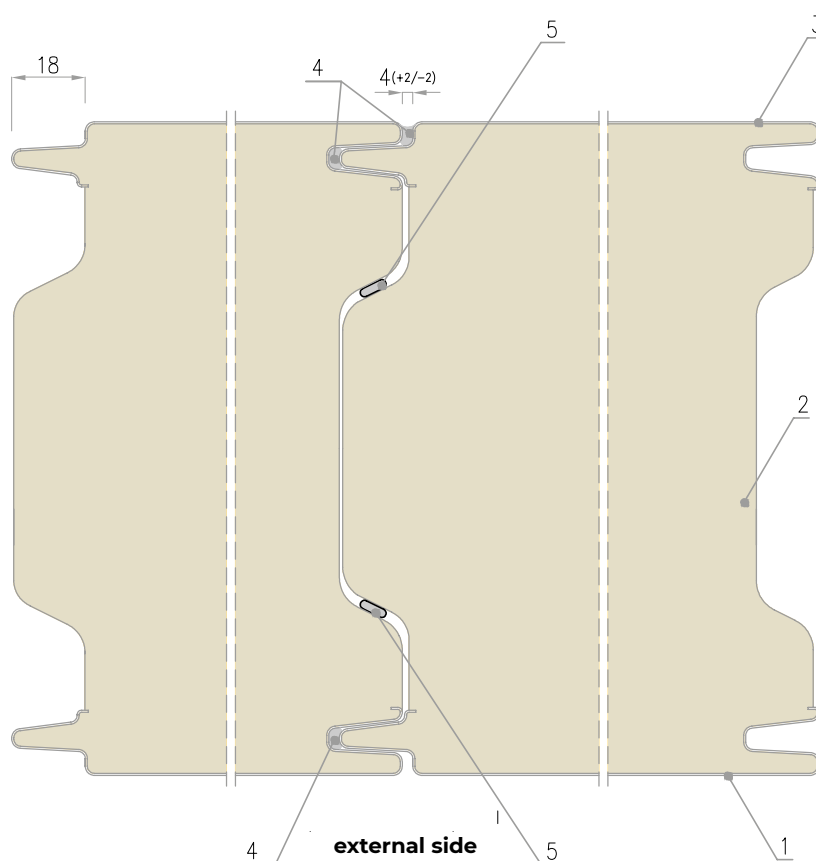
3. IzoCold WALL SANDWICH PANEL

Polyurethane/polyisocyanurate foam core

PIR-F



internal side



1. Steel lining, external, standard gauge 0.50 - 0.60 mm
2. Polyurethane / polyisocyanurate foam core
3. Steel lining, internal, standard gauge 0.40 - 0.50 mm
4. Permanently plastic sealant applied at assembly
5. Polyurethane foam applied at assembly

*1150mm – standard modular width of the panel

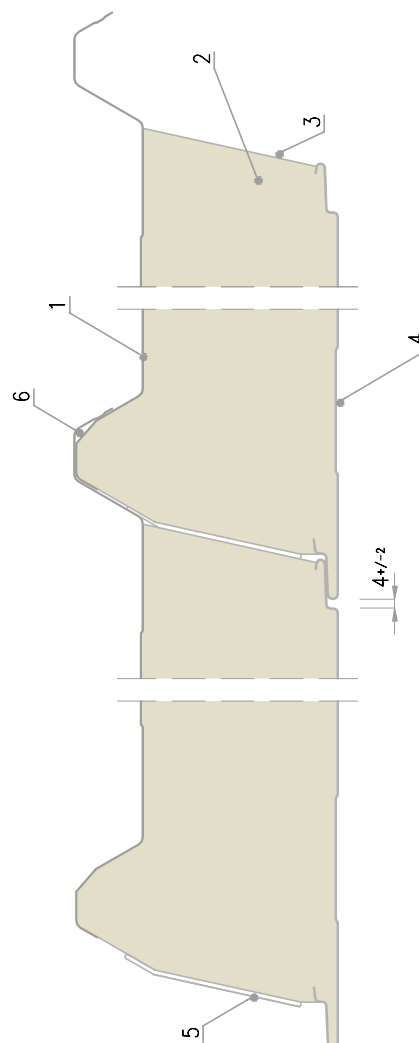
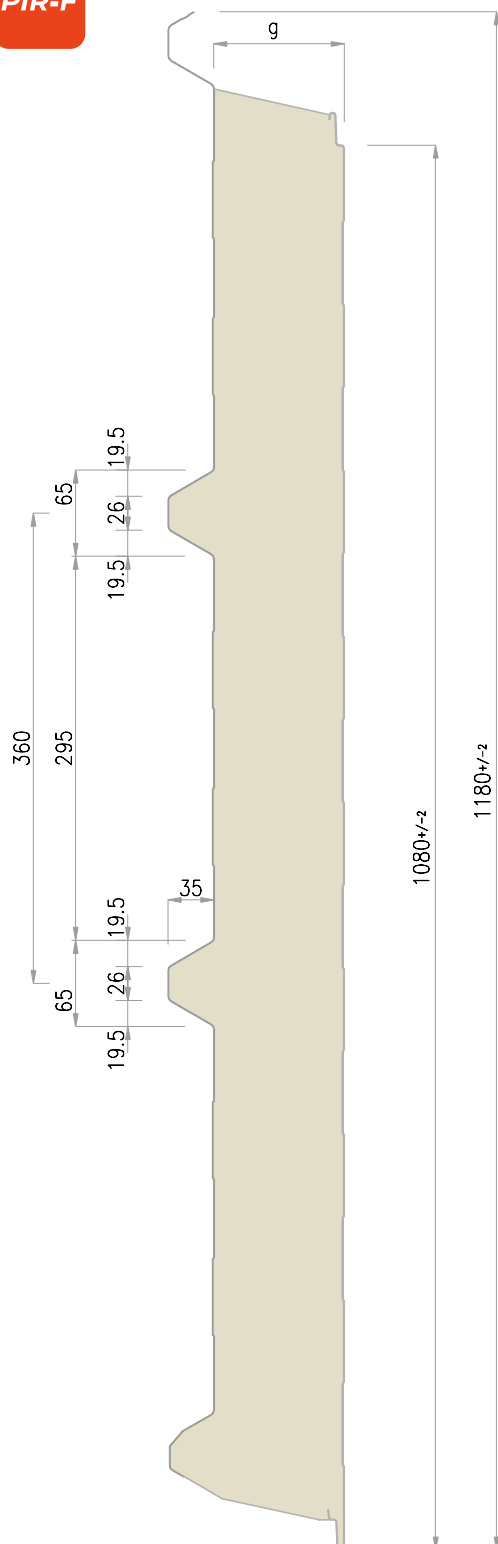
1080mm, 1000mm, 1200mm –modular widths available on request

PIR-N

4.1 IzoRoof ROOF SANDWICH PANEL

Polyisocyanurate foam core

PIR-F



1. Steel lining, external, standard gauge 0.50-0.60 mm
2. Polyurethane / polyisocyanurate foam core
3. Protection strip preventing diffusion and water infiltration
4. Steel lining, internal, standard gauge 0.40-0.50 mm
5. Polyurethane seal

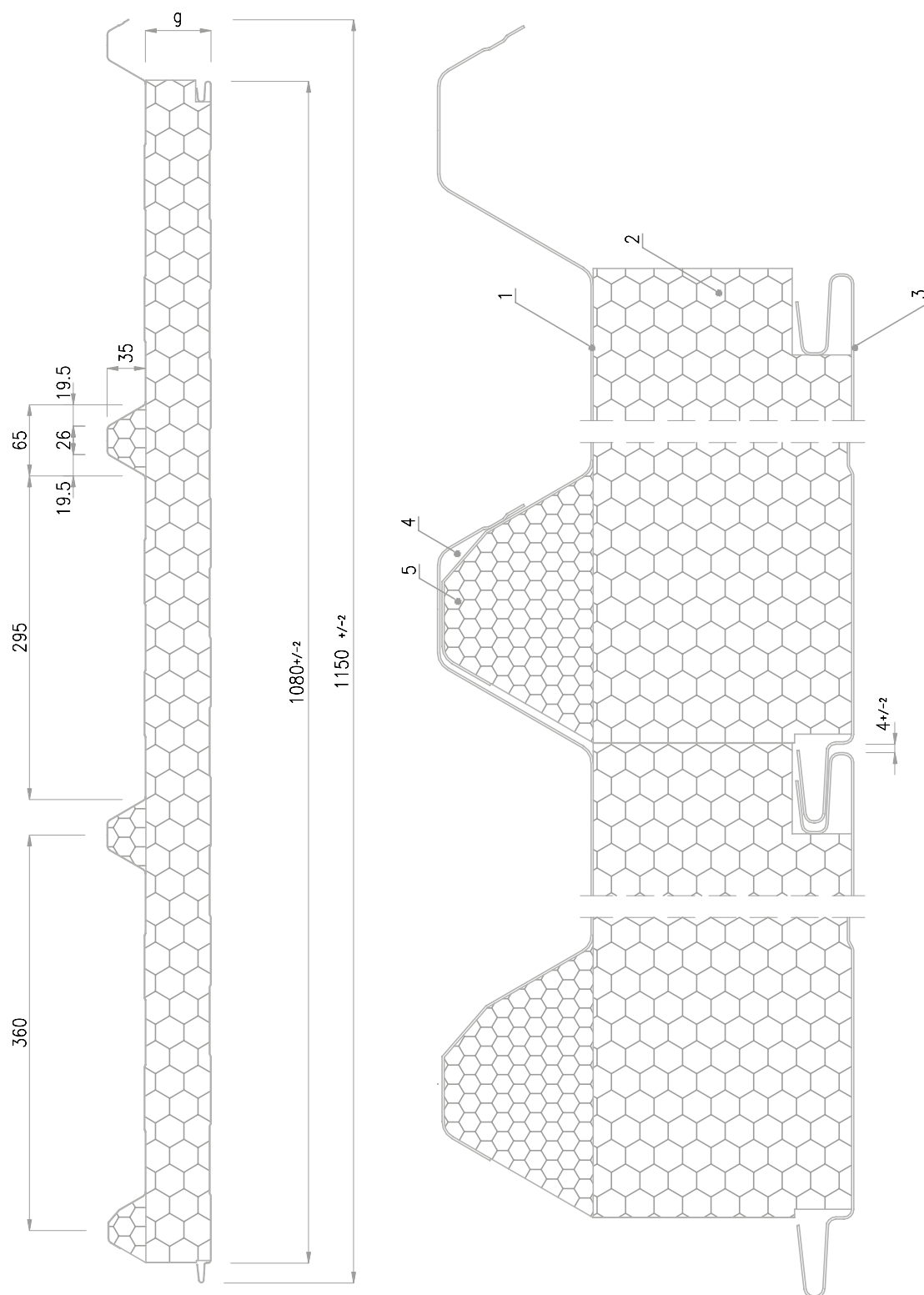
6. Capillary chamber
7. Internal side profile types as in IzoWall panels, one profile type available on the external side

MWF

EPS

4.2 IzoRoof ROOF SANDWICH PANEL

Mineral wool core (MWF) or expanded polystyrene (EPS)



1. Steel lining, external, standard gauge 0,40 – 0,50mm(EPS), 0,50-0,60mm (MWF)
2. Mineral wool (MWF) or expanded polystyrene (EPS) core
3. Steel lining, internal, standard gauge 0.50-0.60 mm
4. Capillary chamber

5. Trapezoid filling - EPS expanded polystyrene foam or mineral wool
6. Internal side profile types as in IzoWall panels, one profile type available on the external side

PIR-N

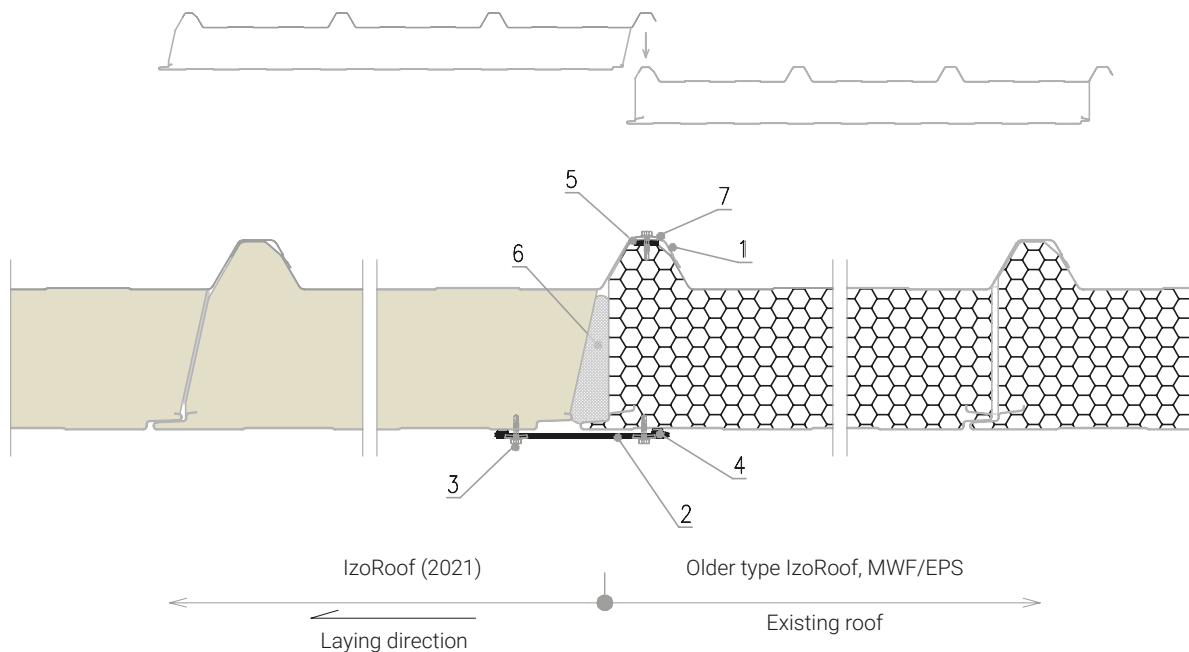
4.3 DETAIL OF THE PANEL CONNECTION

IzoRoof (2021) with an older type sandwich panel

PIR-F

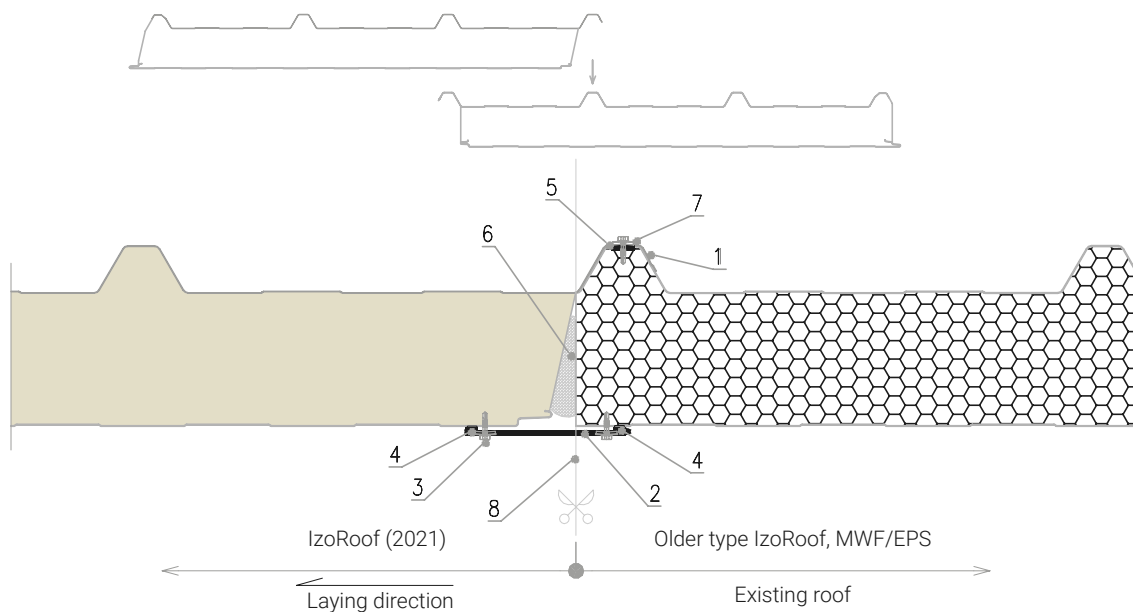
VARIANT 1

The extreme edge of the panel in the existing roof - male lock (filled hump)



VARIANT 2

The extreme edge of the panel in the existing roof - female lock (empty hump)



1. Empty hump of the plate being attached (IzoRoof 2021)
2. Covering dressing
3. Drive screw with EPDM washer
4. Sealing compound or butyl tape
5. Butyl tape applied to the hump of the existing plating
6. Filling the gap with polyurethane foam during assembly

7. Self-drilling connector with EPDM washer every 30 cm along the entire length of the lock
8. Existing panel cutting line - locate it on the edge of the filled hump

PIR-N

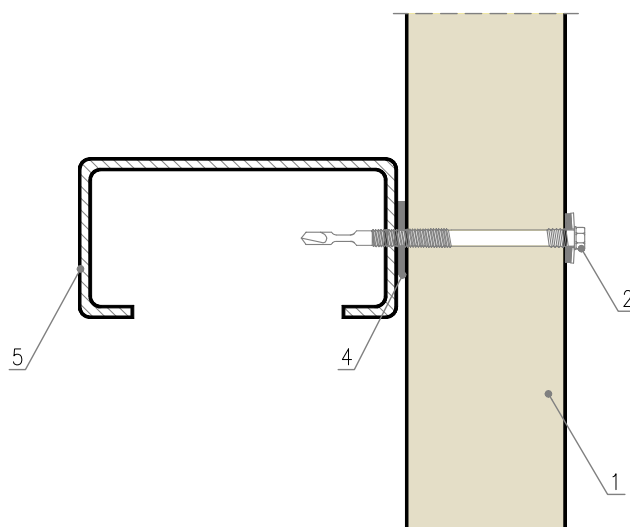
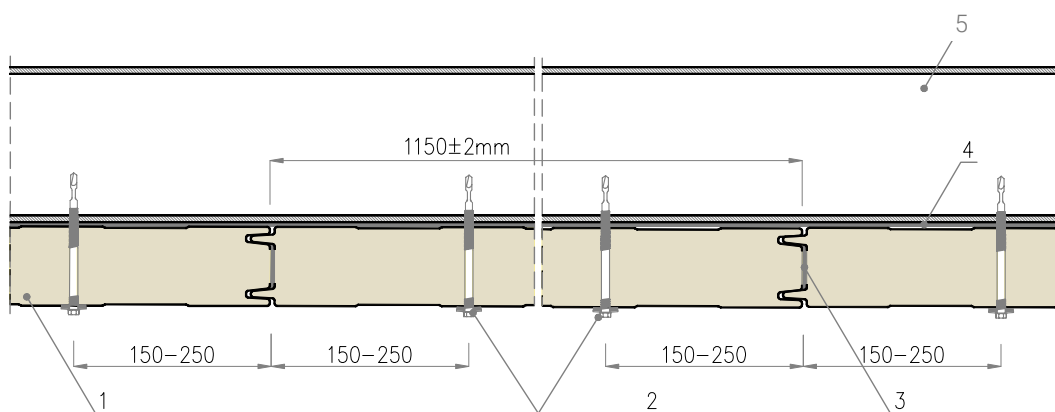
5. IzoWall FASTENING TO THE STRUCTURE

Vertical layout

PIR-F

MWF

EPS



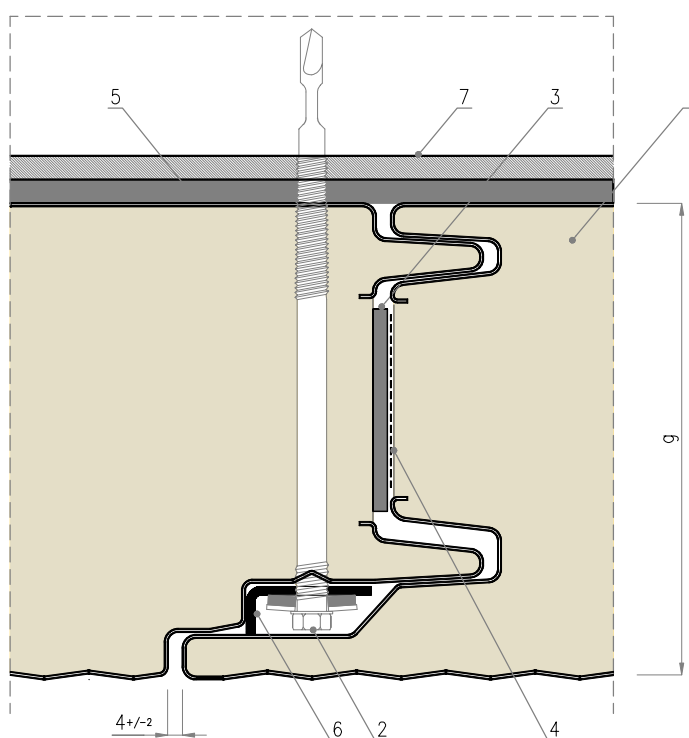
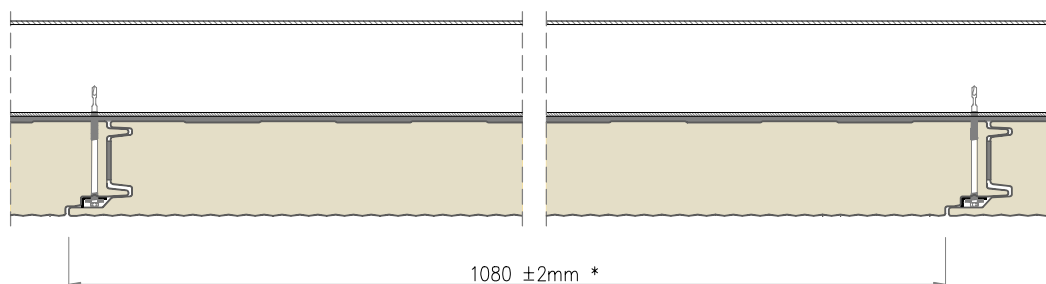
1. IzoWall panel
2. Drive screw with EPDM washer
3. Polyurethane seal
4. Self-adhesive PES sealing tape
5. Steel section, according to the design of the structure

PIR-N

6. IzoGold FASTENING TO THE STRUCTURE

Vertical layout

PIR-F



1. IzoGold PIR/PIR+ panel
 2. Drive screw with EPDM washer
 3. Polyurethane seal
 4. Self-adhesive PES sealing tape
 5. L-02 fastener
 6. Steel section, according to the design of the structure
- * 1080mm - standard modular width of the panel
1000mm - modular width available on request

7. IzoWall FASTENING TO THE STRUCTURE

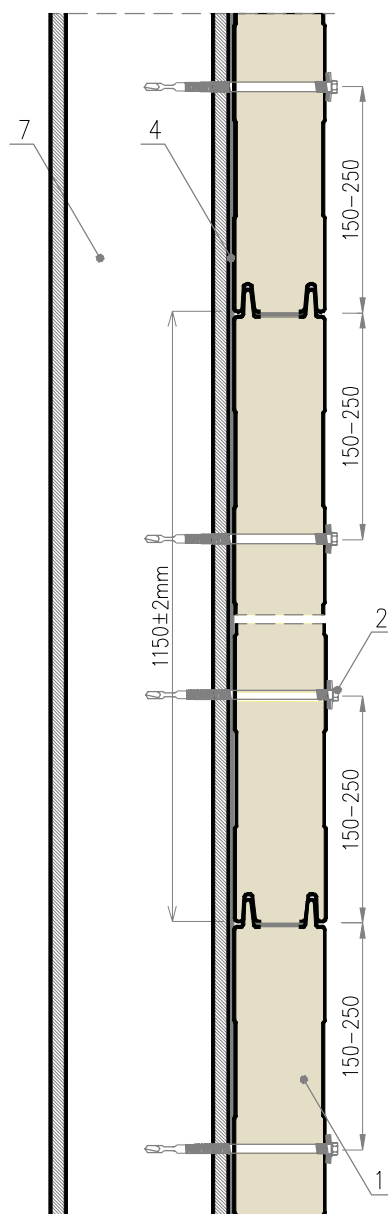
Horizontal configuration

PIR-N

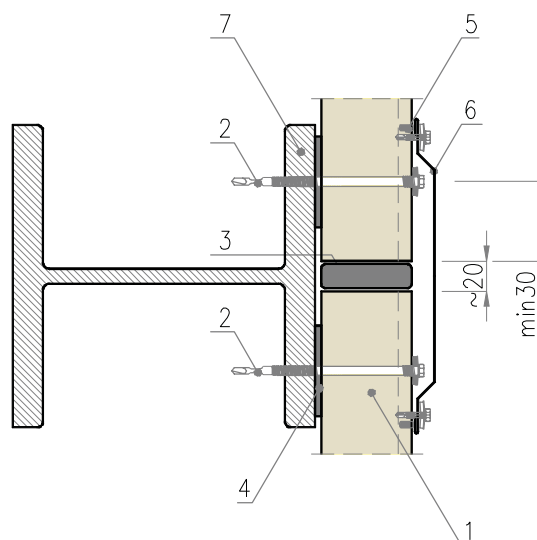
PIR-F

MWF

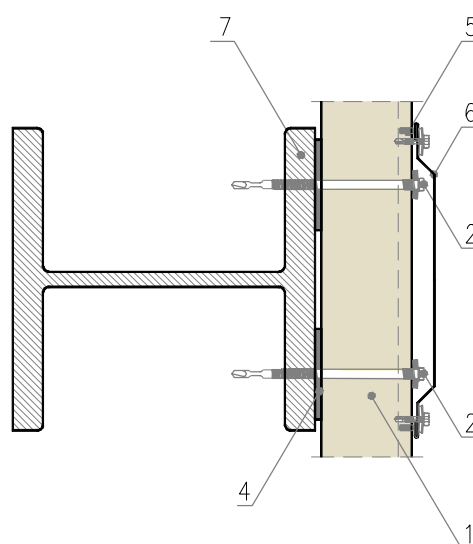
EPS



Panel joint



Intermediate support



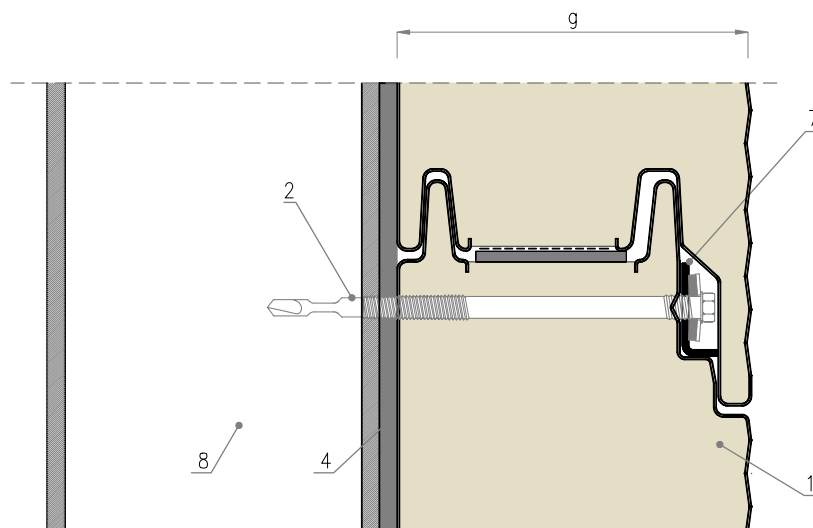
1. IzoWall panel
2. Drive screw with EPDM washer
3. Polyurethane foam as ~20 mm movement joint fill
4. Self-adhesive PES sealing tape
5. Sealant, permanently plastic
6. Ob-35 flashing
7. Steel section, according to the design of the structure

PIR-N

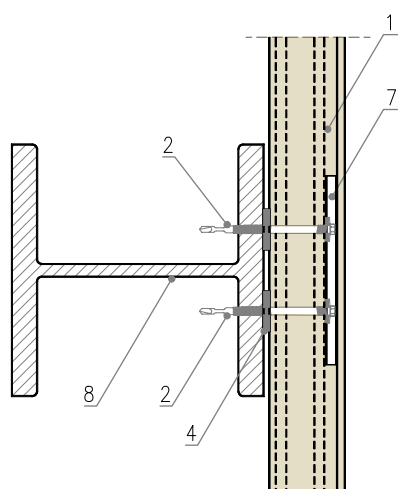
8. IzoGold FASTENING TO THE STRUCTURE

Horizontal configuration

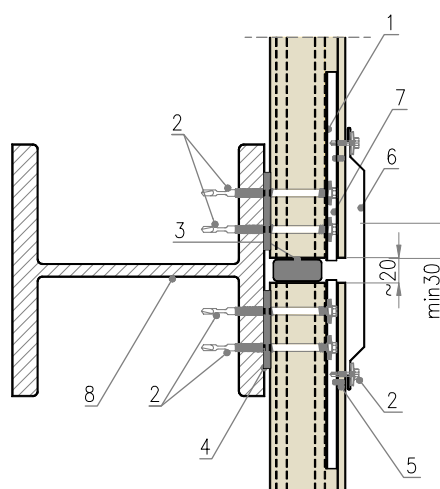
PIR-F



Intermediate support



Panel joint



1. IzoGold PIR-N/PIR-F panel
2. Drive screw with EPDM washer (optionally two fasteners next to each other)
3. Polyurethane foam as ~20 mm movement joint fill
4. Self-adhesive PES sealing tape
5. Sealant, permanently plastic
6. Ob-35 flashing
7. L-02 fastener
8. Steel section, according to the design of the structure

9. CORNER JOINT

IzoWall, IzoGold

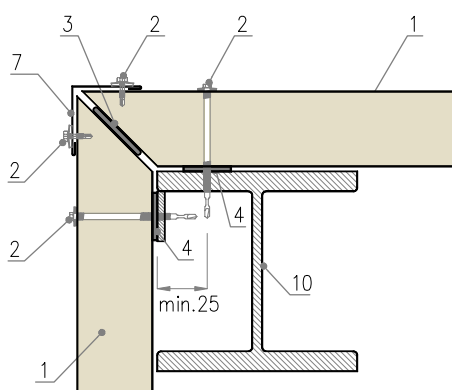
PIR-N

PIR-F

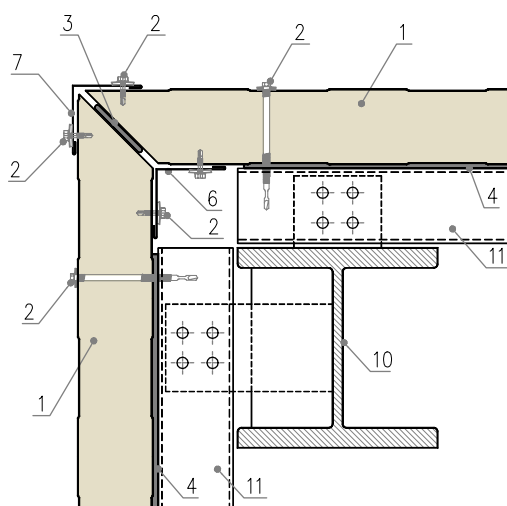
MWF

EPS

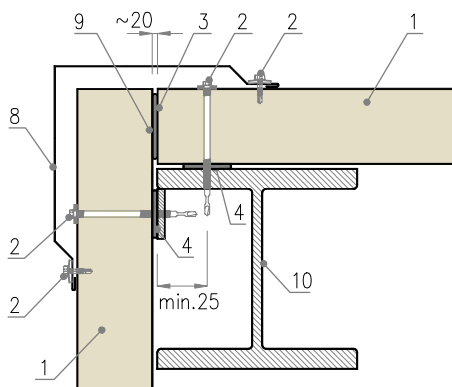
Variant I
horizontal arrangement



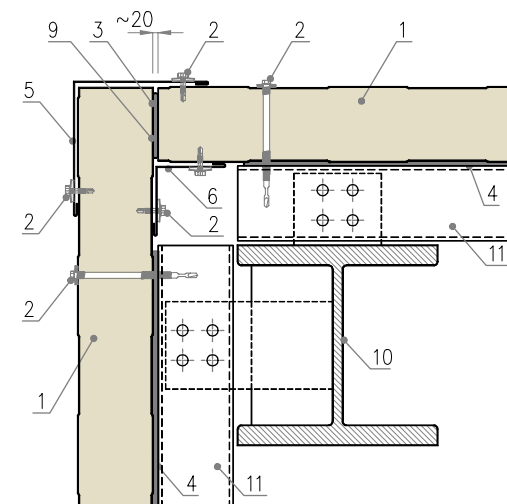
Variant II
vertical arrangement



Variant II
horizontal arrangement



Variant II
vertical arrangement



1. IzoWall PIR-N/PIR-F; MWF; EPS and IzoGold PIR-N/PIR-F panel
2. Drive screw with EPDM washer
3. Polyurethane foam
4. Self-adhesive PES sealing tape
5. Ob-10 flashing
6. Ob-11 flashing

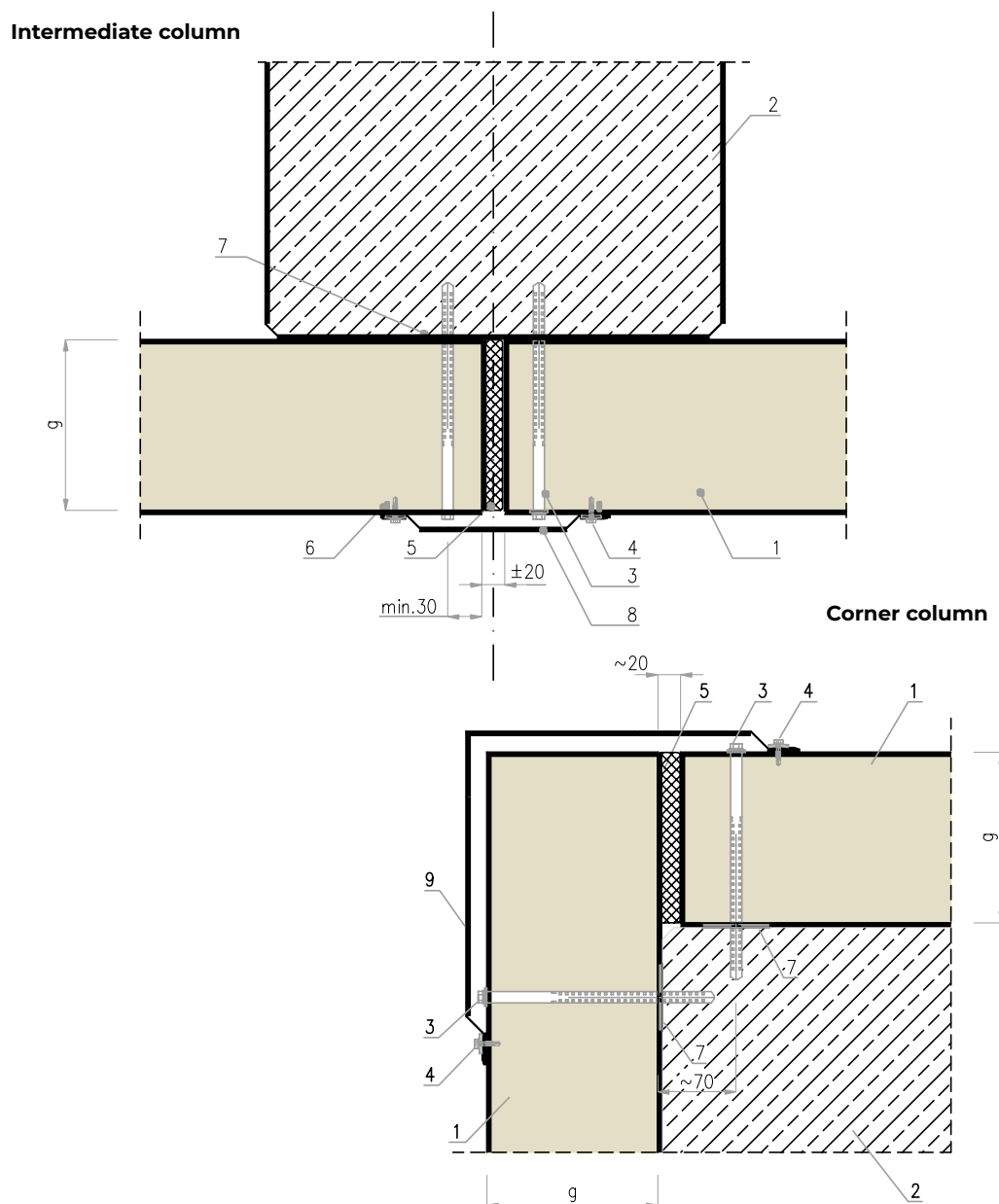
7. Ob-12 flashing
8. Ob-42 flashing
9. Facing locally cut out for stricter thermal performance requirements
10. Steel column according to the design of the structure
11. Steel purlin according to the design of the structure

PIR-N

10. FASTENING PANELS TO REINFORCED CONCRETE COLUMN

IzoWall, horizontal arrangement

PIR-F



1. IzoWall panel – horizontal arrangement
2. Reinforced concrete column
3. Fastener to the reinforced concrete with a washer
4. Drive screw with EPDM washer
5. Polyurethane foam as movement joint fill
6. Sealant, permanently plastic

7. Self-adhesive PES sealing tape
8. Ob-35 flashing
9. Ob-42 flashing

PIR-N

11. GROUND BEAM JOINT

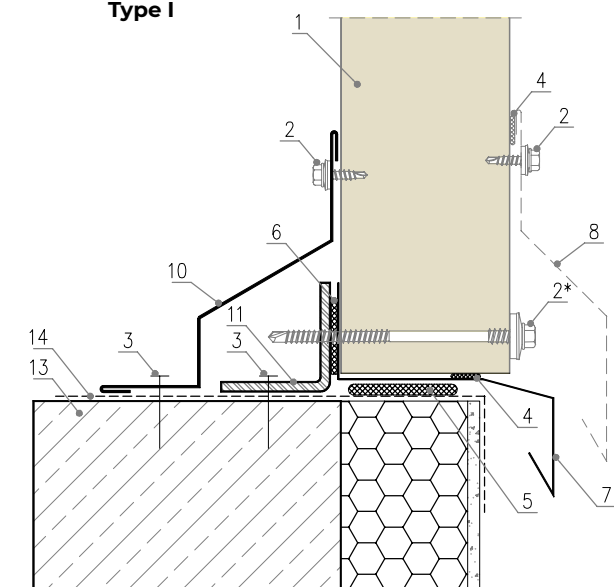
IzoWall, IzoGold, vertical configuration

PIR-F

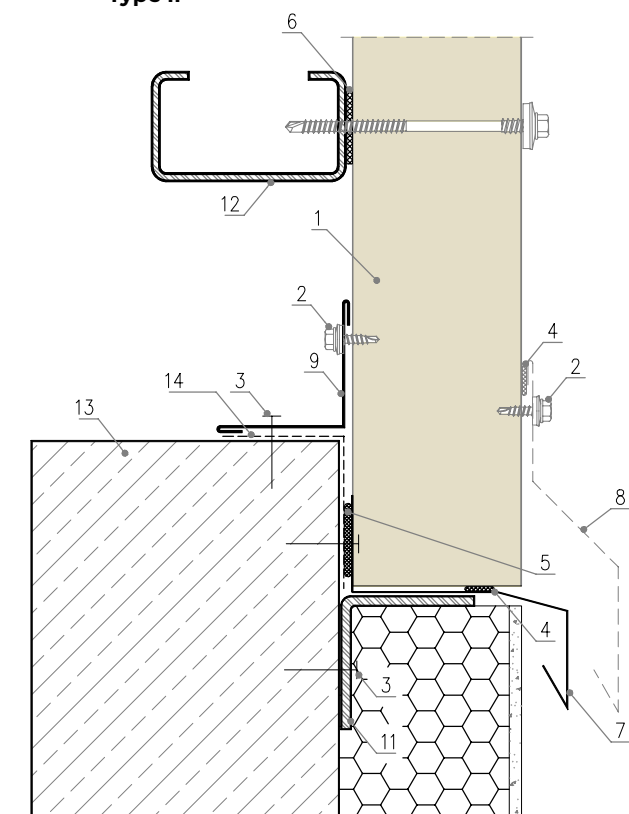
MWF

EPS

Type I



Type II



1. IzoWall, IzoGold PIR-N/PIR-F ; MWF ; EPS panel
2. Drive screw with EPDM washer
3. Nail plug screw
4. Permanently plastic sealant
5. PURS tape / polyurethane foam
6. PES tape
7. Ob-45 flashing (drip cap)
8. Optional facade drip cap
Ob-05, Ob-06 or Ob-07
9. Ob-11 flashing
10. Optional custom masking flashing (dimensions
depends on the type of steel section)
11. Steel section L-profile, according to
the design of the structure
12. Steel section - wall beam
13. Ground beam
14. Waterproofing

Notice:

* For IzoGold, It is recommended to use 2 screws
and L-02 connector on every support

I

PIR-N

12. GROUND BEAM JOINT

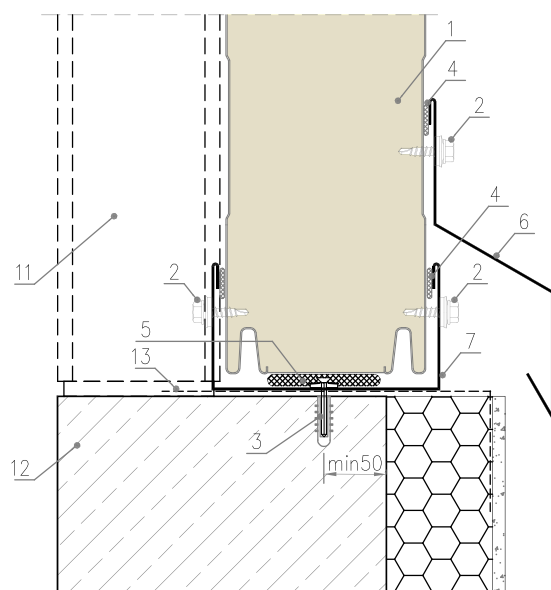
IzoWall, horizontal configuration

PIR-F

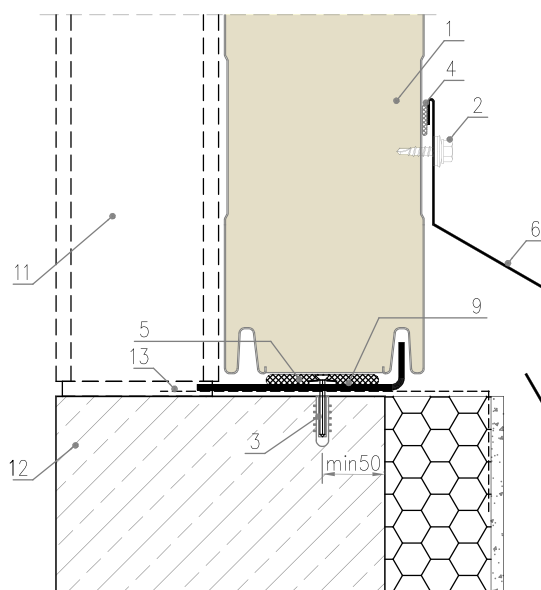
MWF

EPS

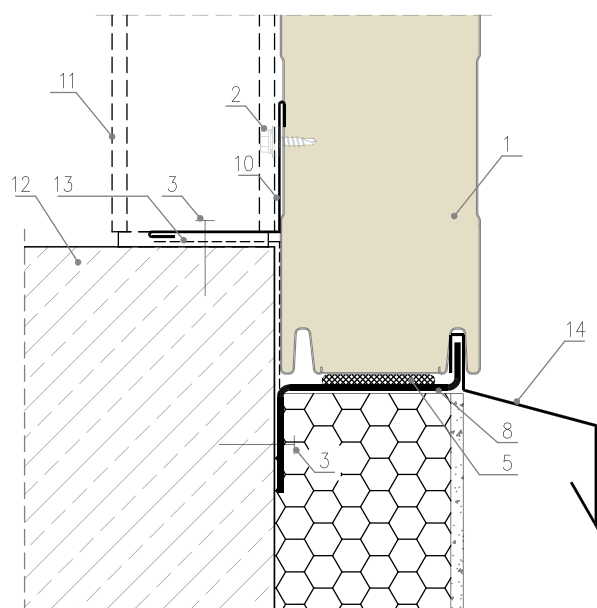
Type I



Type II



Type III



1. IzoWall, IzoGold PIR-N/PIR-F ; MWF ; EPS panel
2. Drive screw with EPDM washer
3. Nail plug screw
4. Permanently plastic sealant
5. PURS tap
6. Ob-07 flashing (drip cap)
(optionally: Ob-05 lub Ob-06)
7. Ob-20 flashing
8. Ob-39 flashing - wall panels starter
9. Ob-40 flashing - wall panels starter
10. Ob-11 flashing
11. Steel column (+ PES tape)
12. Ground beam
13. Waterproofing
14. The Ob-07.1 drip flashing is applied to the vertical edge of the starter.

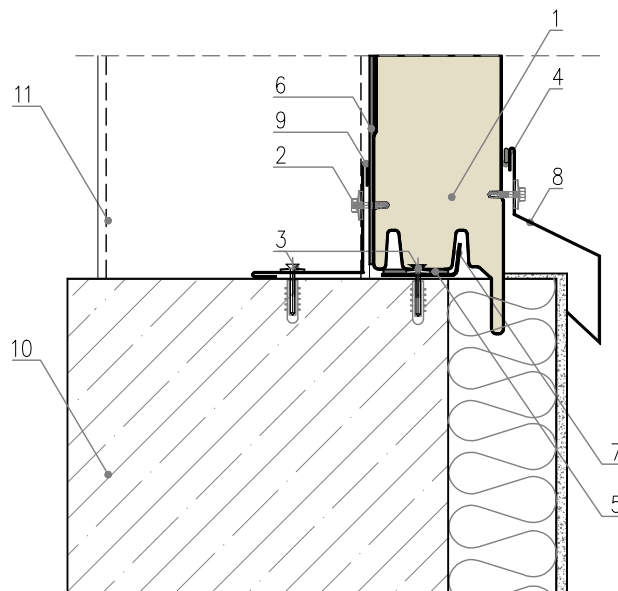
PIR-N

13. GROUND BEAM JOINT

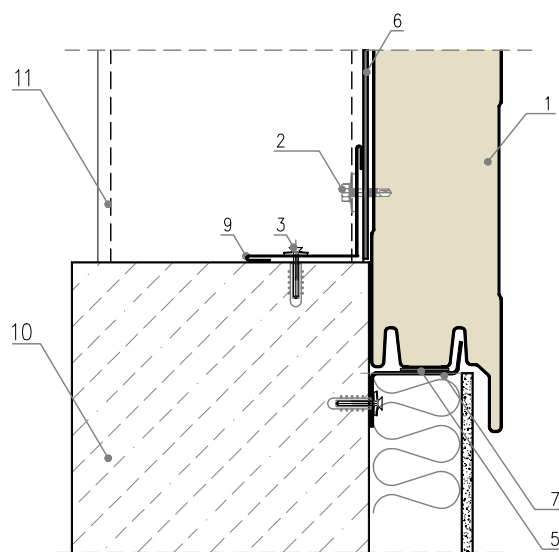
IzoGold, horizontal configuration

PIR-F

Type I



Type II



1. IzoGold PIR-N/PIR-F panel
2. Drive screw with EPDM washer
3. Nail plug screw
4. Sealant, permanently plastic
5. PURS tape / polyurethane foam
6. Self-adhesive PES sealing tape
7. Custom Ob-00 flashing (specify parameters and section drawing)
8. Ob-07 flashing
9. Ob-11 flashing
10. Ground beam
11. Steel section, according to the design of the structure

PIR-N

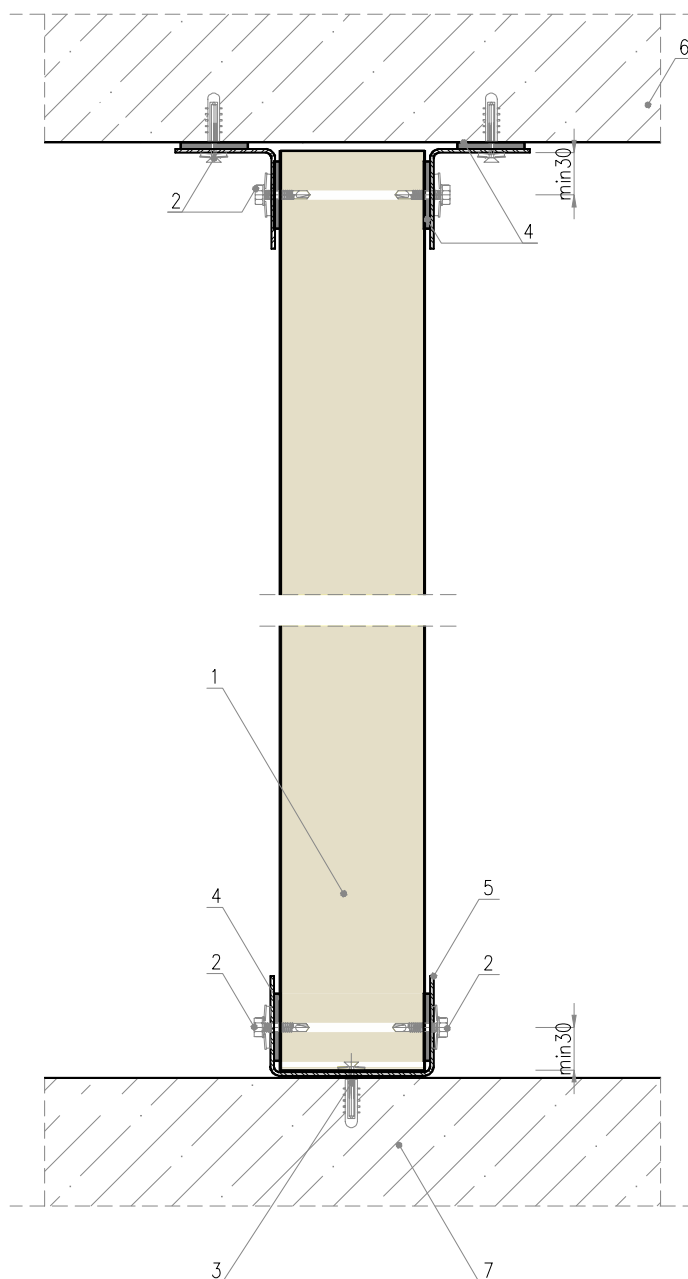
14. PARTITION WALL

IzoWall, IzoGold

PIR-F

MWF

EPS



1. IzoWall PIR-N/PIR-F; MWF; EPS and IzoGold PIR-N/PIR-F panel
2. Drive screw with EPDM washer
3. Nail plug screw
4. Self-adhesive PES sealing tape (recommended)
5. U-beam, cold-bent
6. Ceiling
7. Concrete foundation

PIR-N

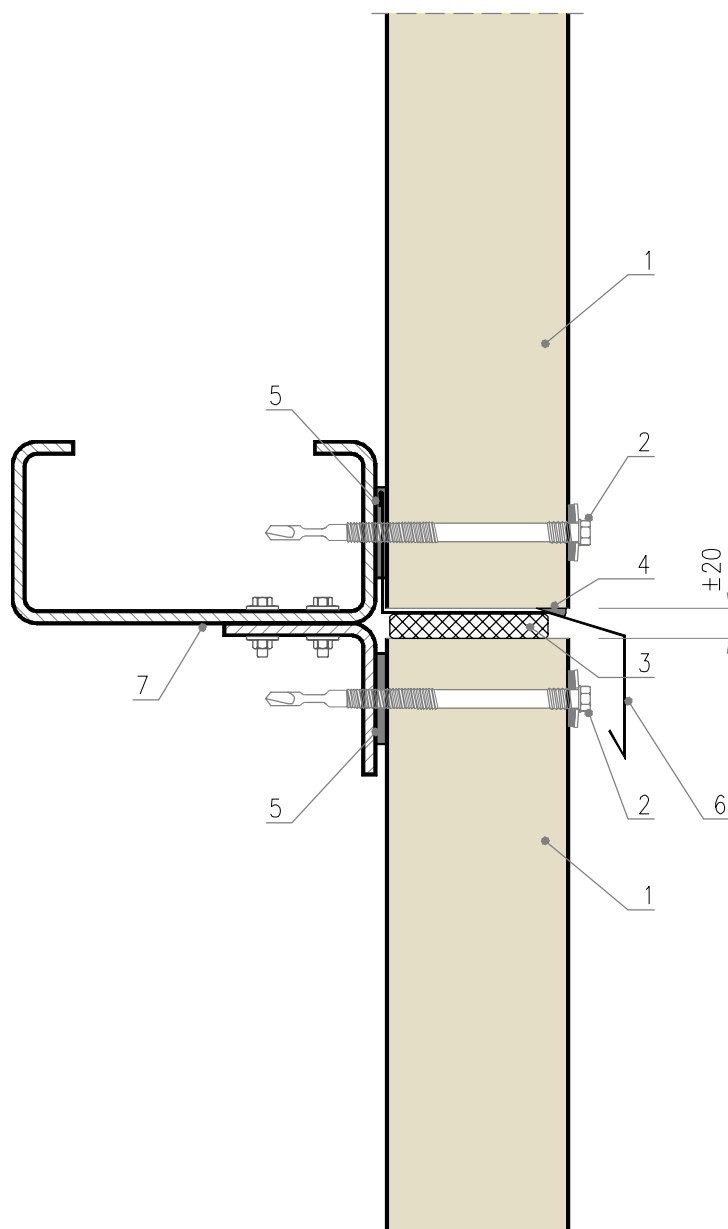
15. JOINING PANELS LENGTHWISE

IzoWall, vertical configuration, high objects

PIR-F

MWF

EPS



1. IzoWall wall panel
2. Drive screw with EPDM washer
3. Polyurethane foam or impregnated PU gasket
4. Sealant
5. Self-adhesive PES sealing tape
6. Custom flashing (drip cap)
7. Steel section, according to the design of the structure

PIR-N

16. SLIDING JOINT

IzoWall, IzoRoof

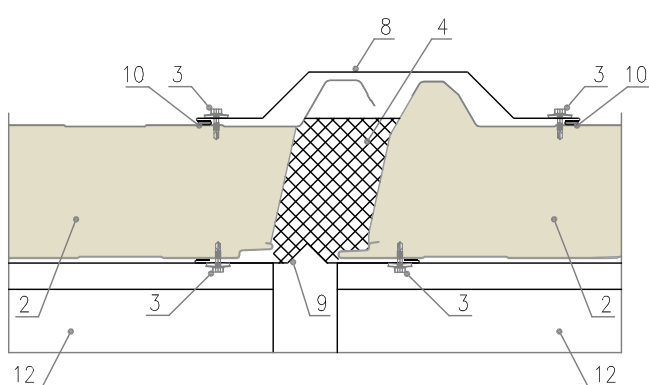
PIR-F

MWF

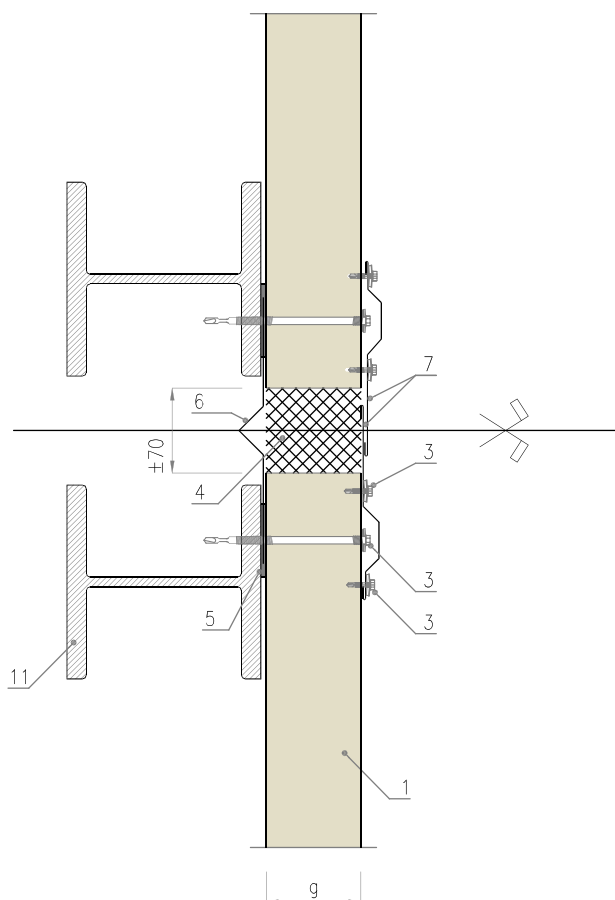
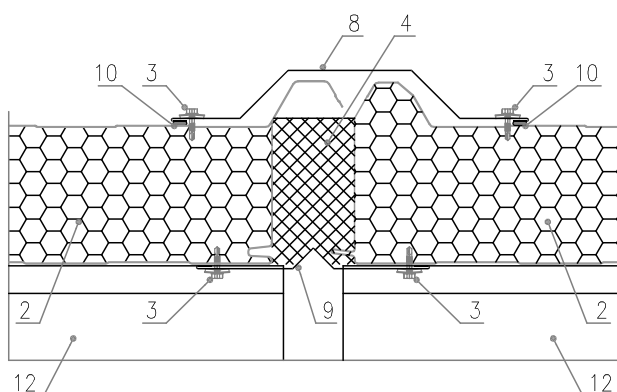
EPS

Sliding joint - wall

Sliding joint - roof PIR-N/PIR-F



Sliding joint - roof (MWF, EPS)



1. IzoWall panel
2. IzoRoof panel
3. Drive screw with EPDM washer
4. Insulation applied during assembly
5. Self-adhesive PES sealing tape
6. Internal custom flashing (sliding joint - wall)

7. External custom flashing (sliding joint - wall)
8. Top custom flashing (sliding joint - roof)
9. Bottom custom flashing (sliding joint - roof)
10. Sealant, permanently plastic
11. Steel column according to the design of the structure
12. Roof construction (purlins)

PIR-N

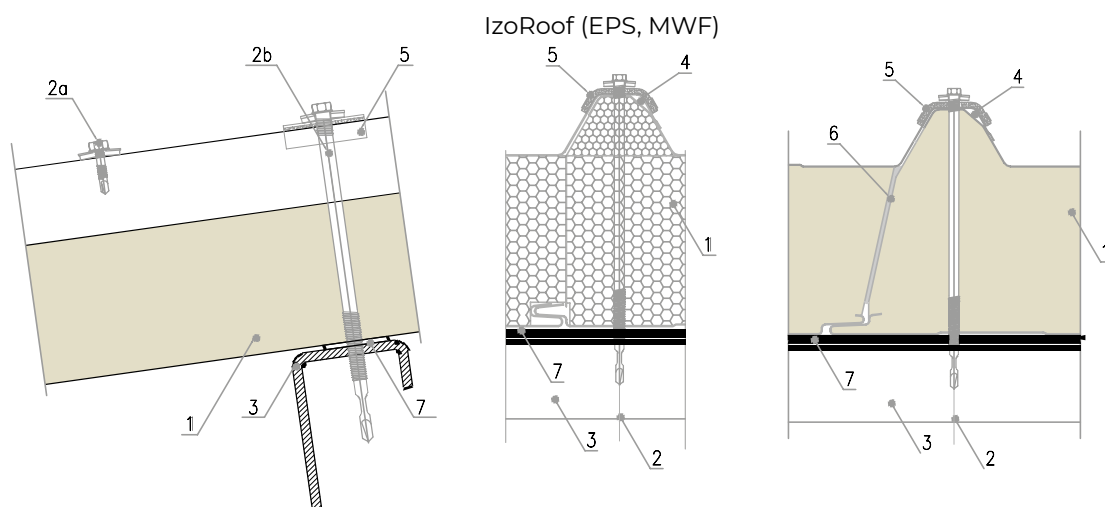
17. FASTENING TO THE STRUCTURE WITH LATERAL PANEL JOINT

IzoRoof

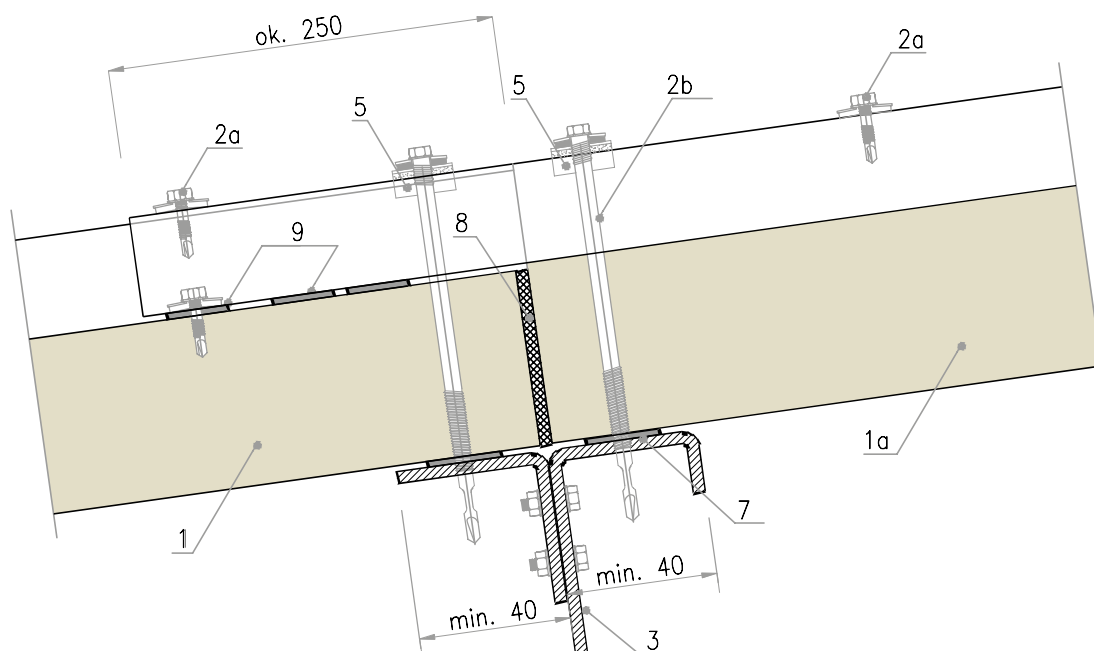
PIR-F

MWF

EPS



Joining roof panels lengthwise



1. IzoRoof PIR-N/PIR-F; MWF; EPS panel

1a. IzoRoof panel with undercut core - removal of the core fragment on assembly; panel produced with pre-cut bottom cladding

2. Drive screws axis

2a. Drive screw with EPDM washer (for lateral joining of panels - recommended span of 30 cm)

2b. Drive screw with EPDM washer (fastening panels to the structure)

3. Purlin

4. Capillary chamber

5. L-03 fastener

6. Polyurethane seal

7. Self-adhesive PES sealing tape

8. PURS tape or polyurethane foam

9. Butyl tape, min. 2 strips minimum (3 strips recommended for low slope)

In the case of consider connection of roof panels undercut with different types of cores in the project, please contact Izopanel Sales Department.

18. ROOF RIDGE

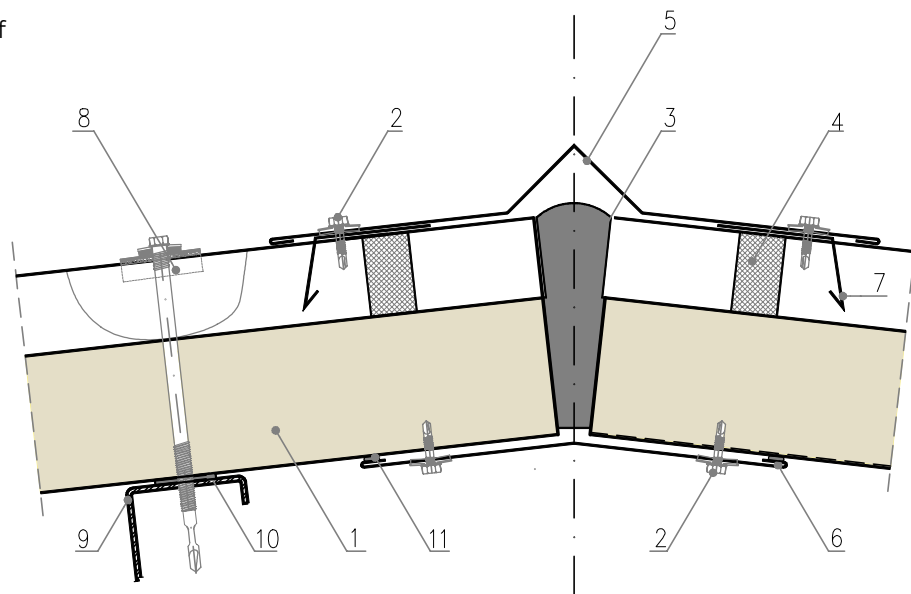
PIR-N

IzoRoof

PIR-F

MWF

EPS



1. IzoRoof PIR-N/PIR-F ; MWF ; EPS panel

2. Drive screw with EPDM washer

3. Polyurethane foam

4. Polyethylene sealing strip

5. Ob-03 roof flashing

6. Ob-04 roof flashing

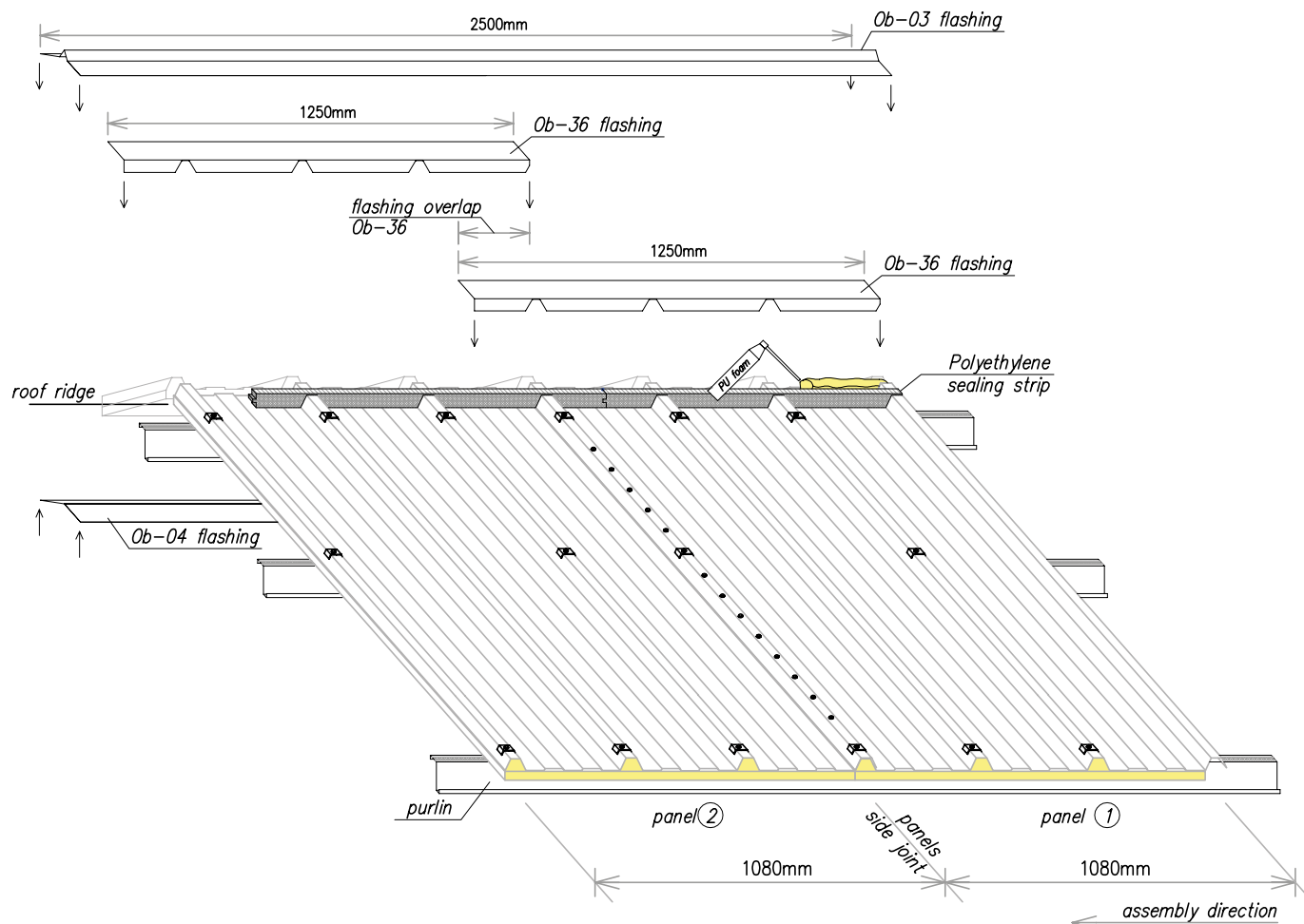
7. Ob-36 roof flashing

8. L-03 fastener "saddle washer"

9. Purlin

10. PES tape

11. Permanently plastic sealant



PIR-N

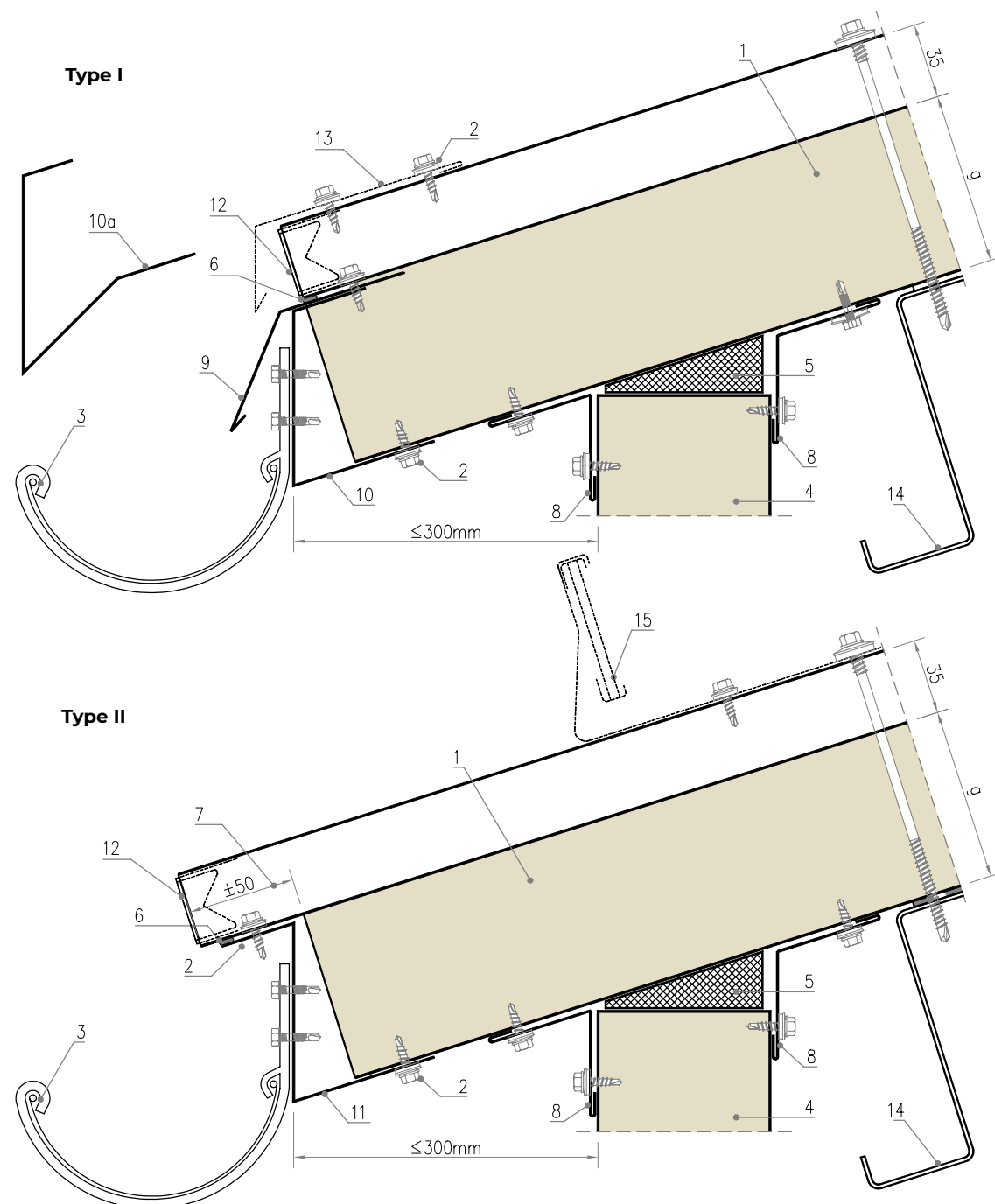
19. EAVES WITH OPTIONAL SNOW GUARDS FASTENING

IzoRoof

PIR-F

MWF

EPS



1. IzoRoof PIR-N/PIR-F; MWF; EPS panel
2. Drive screw with EPDM washer
3. Gutter and steel gutter bracket
4. IzoWall/IzoGold wall panel
5. Polyurethane assembly foam
6. Sealant
7. Alternatively panel undercut at eaves
8. Ob-11 flashing
9. Flashing Ob-18 (verge trim)

10. Ob-19 flashing $g=0,88$ mm
- 10a. Custom flashing instead of Ob-19 flashing for panel with thickness 80 mm
11. Verge trim individual for an alternative of panel with undercut (Ob-46), $g=0,88$ mm
12. Ob-34 (eaves masking strip)
13. Alternatively rib plugs instead of Ob-34,
14. Alternatively systemspecific snow guard
15. Snow guard fastening screws

20. TOP WALL PANEL JOINING ELEMENT

PIR-N

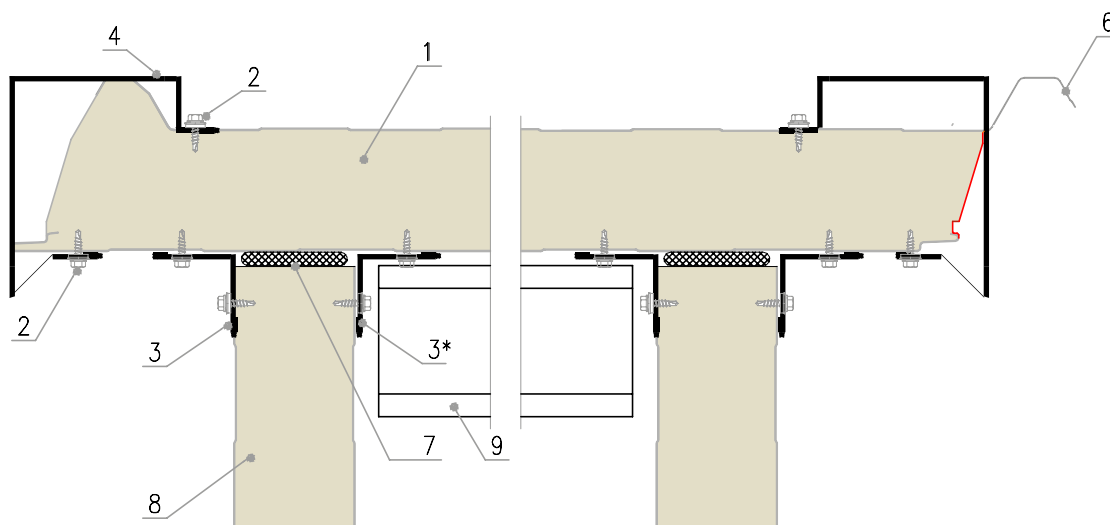
IzoRoof

PIR-F

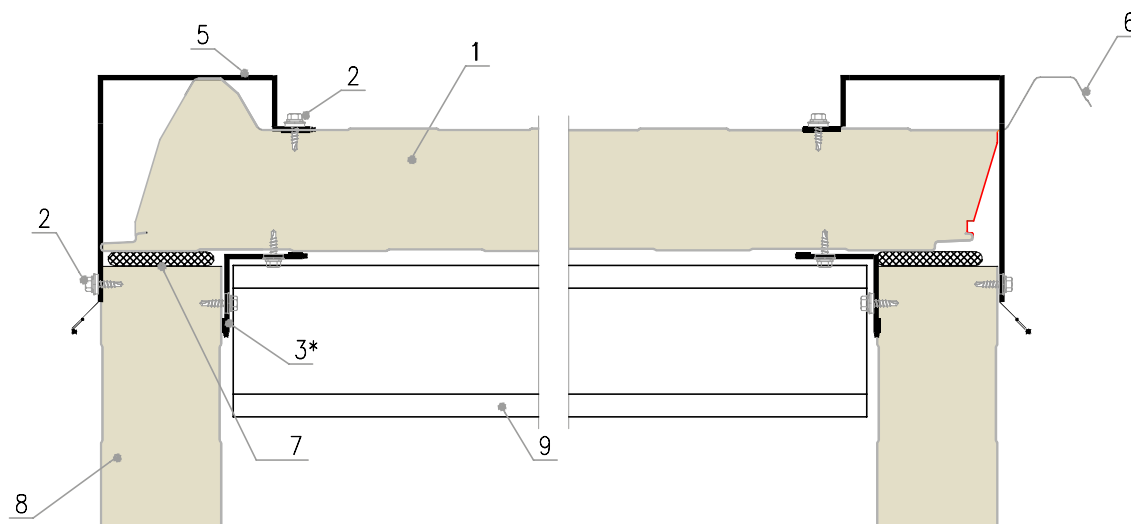
Type I - overhanging

MWF

EPS



Type II - non-overhanging



1. IzoRoof PIR-N/PIR-F ; MWF ; EPS panel

2. Drive screw with EPDM washer

3. Ob-11 roof flashing

4. Ob-29 roof flashing

5. Ob-30 roof flashing

6. Cut at the construction site

7. Polyurethane foam

8. IzoWall / IzoGold wall panel

9. Roof panel support (purlin)+PES tape

10. Optionally Ob-31+Ob-37 flashings instead of Ob-29

11. Optionally Ob-32+Ob-37 flashings instead of Ob-30

12. Ob-37 flashing

Notice:

* Depending on the design solution, a steel L-profile may be used instead of Ob-11 flashing.

PIR-N

21. JOINT OF TOP WALL PANEL PROTRUDING OVER THE ROOF

IzoRoof

PIR-F

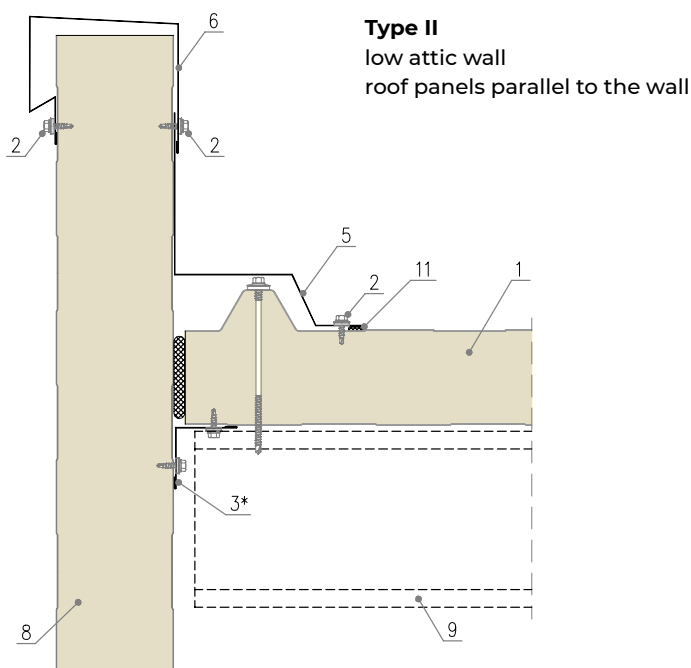
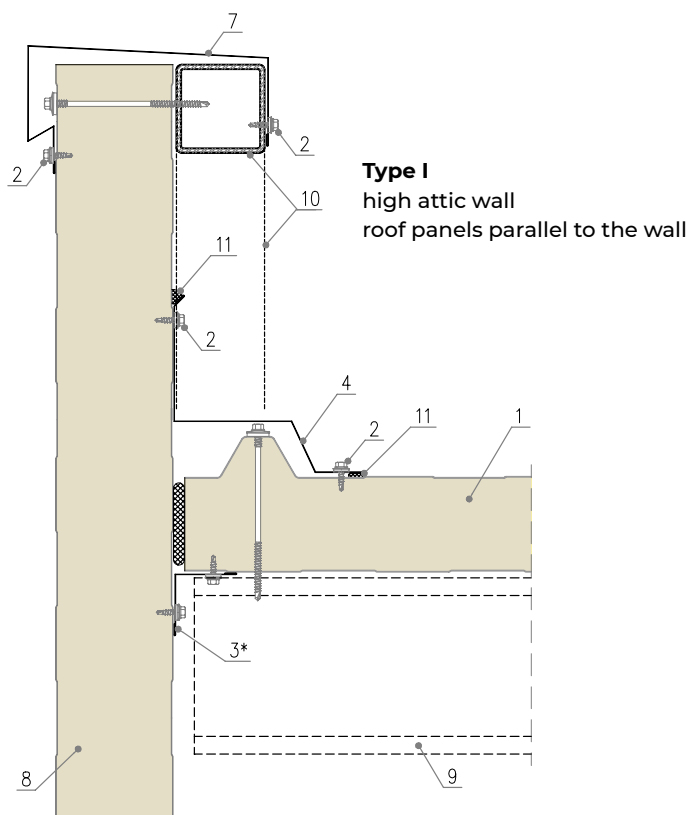
MWF

EPS

1. IzoRoof PIR-N/PIR-F ; MWF ; EPS panel
2. Drive screw with EPDM washer
3. Polyurethane foam
4. Ob-21 flashing
5. Ob-21a flashing
6. Ob-38 custom flashing
7. Custom Ob-00 flashing (specify parameters and section drawing)
8. IzoWall / IzoGold wall panel
9. Roof panel support (purlin) + PES tape
10. Attic wall construction
11. Permanently plastic sealant

Notice:

* Depending on the design solution, a steel L-profile may be used instead of Ob-11 flashing.



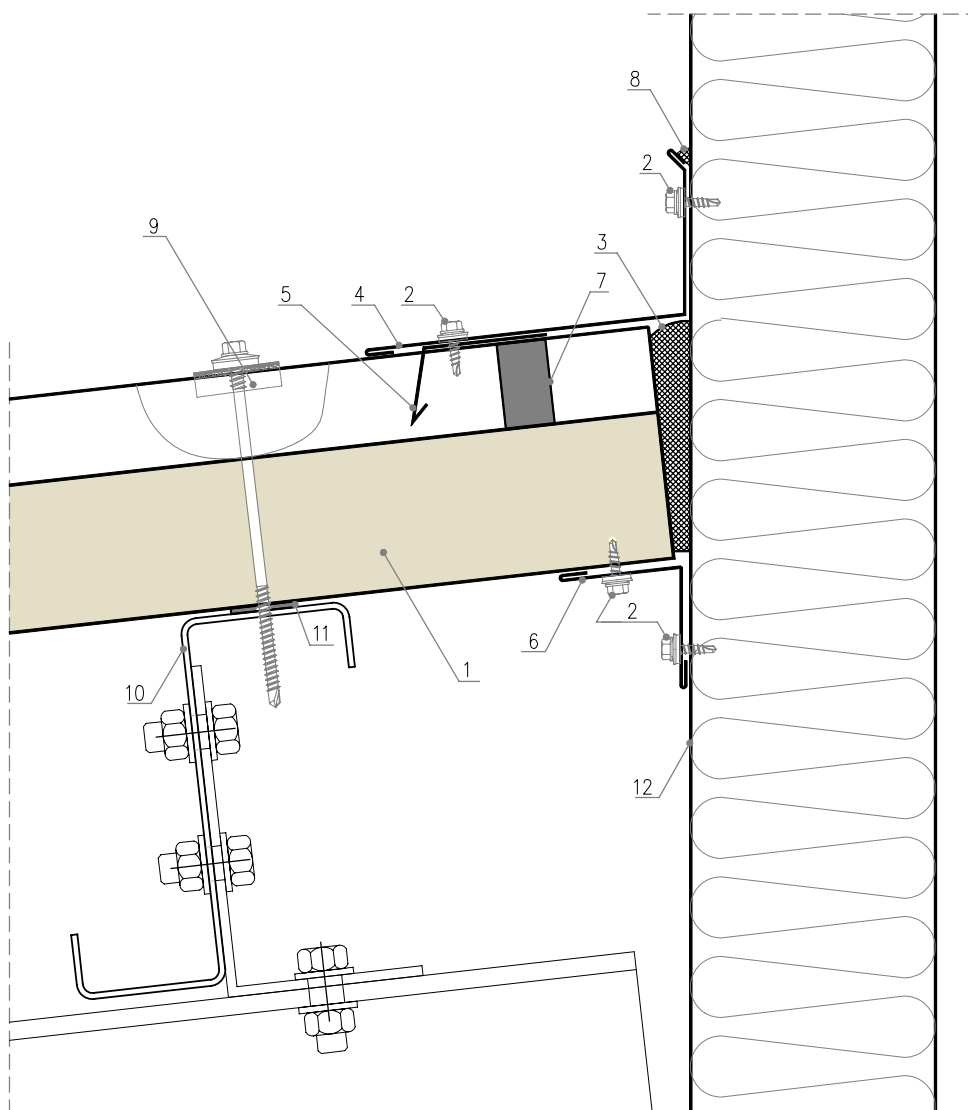
PIR-N

22. ROOF EDGE NEXT TO HIGHER BUILDING'S WALL

IzoRoof

PIR-F

MWF

EPS

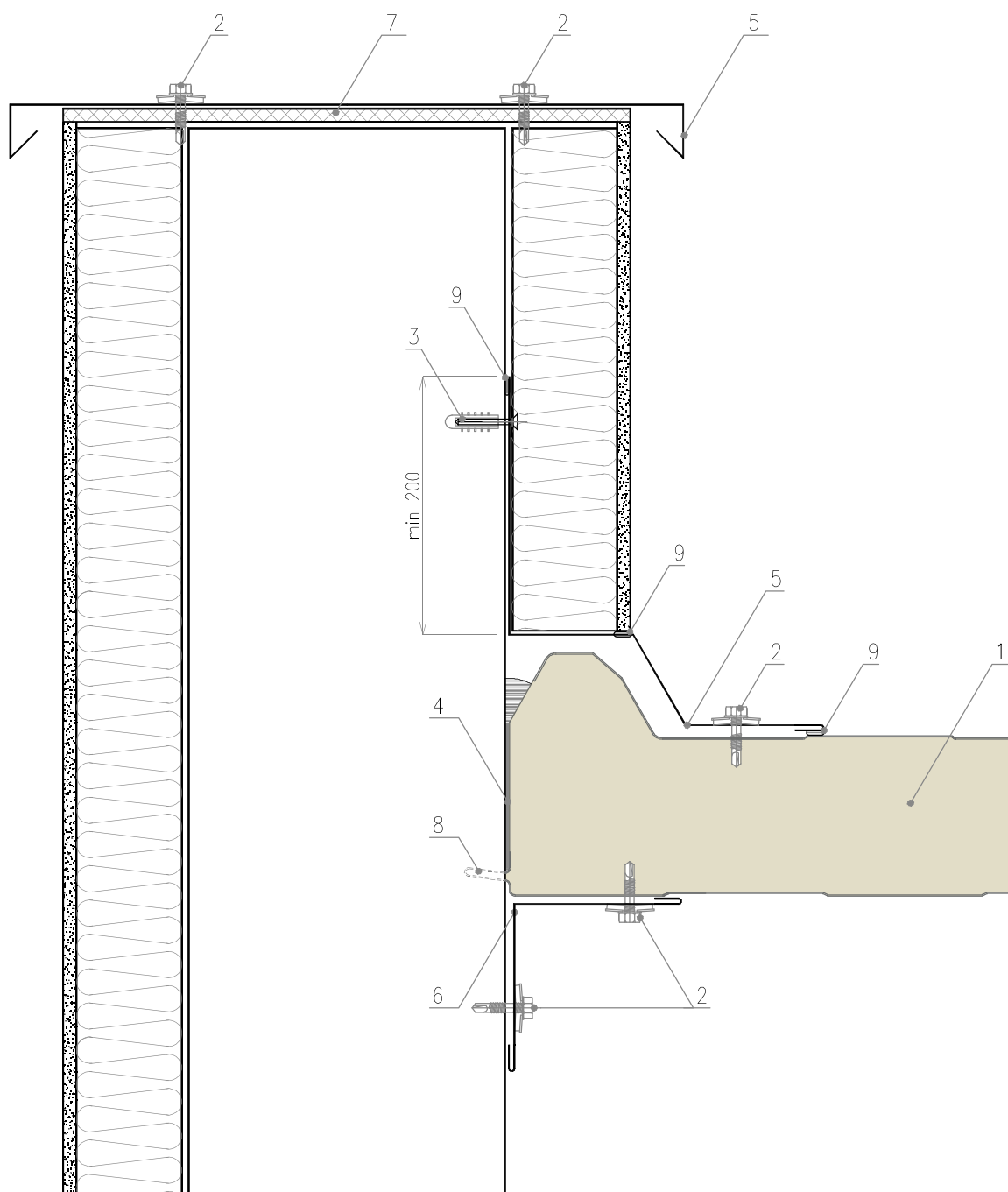
1. IzoRoof PIR/PIR+; MWF; EPS panel
2. Drive screw with EPDM washer
3. Polyurethane foam
4. Custom Ob-00 flashing
(specify parameters and section drawing)
5. Ob-36 flashing
6. Ob-11 flashing
7. Polyethylene sealing strip adjusted to IzoRoof panel profile
8. Sealant
9. L-03 fastener
10. Purlin
11. Self-adhesive PES sealing tape
12. Higher building's wall

PIR-N **23. JOINT OF BRICK WALL**
PIR-F **PROTRUDING OVER THE ROOF**

IzoRoof

MWF

EPS



1. IzoRoof PIR-N/PIR-F; MWF; EPS panel
2. Drive screw with EPDM washer
3. Nail plug screw
4. Polyurethane foam
5. Custom Ob-00 flashing (specify parameters and section drawing)
6. Ob-11 flashing
7. Panel for flashing installation (e.g. OSB panel)
8. To be cut at the construction site
9. Sealant, permanently plastic

24. JOINT OF HIGHER EDGE OF A MONOPITCHED ROOF

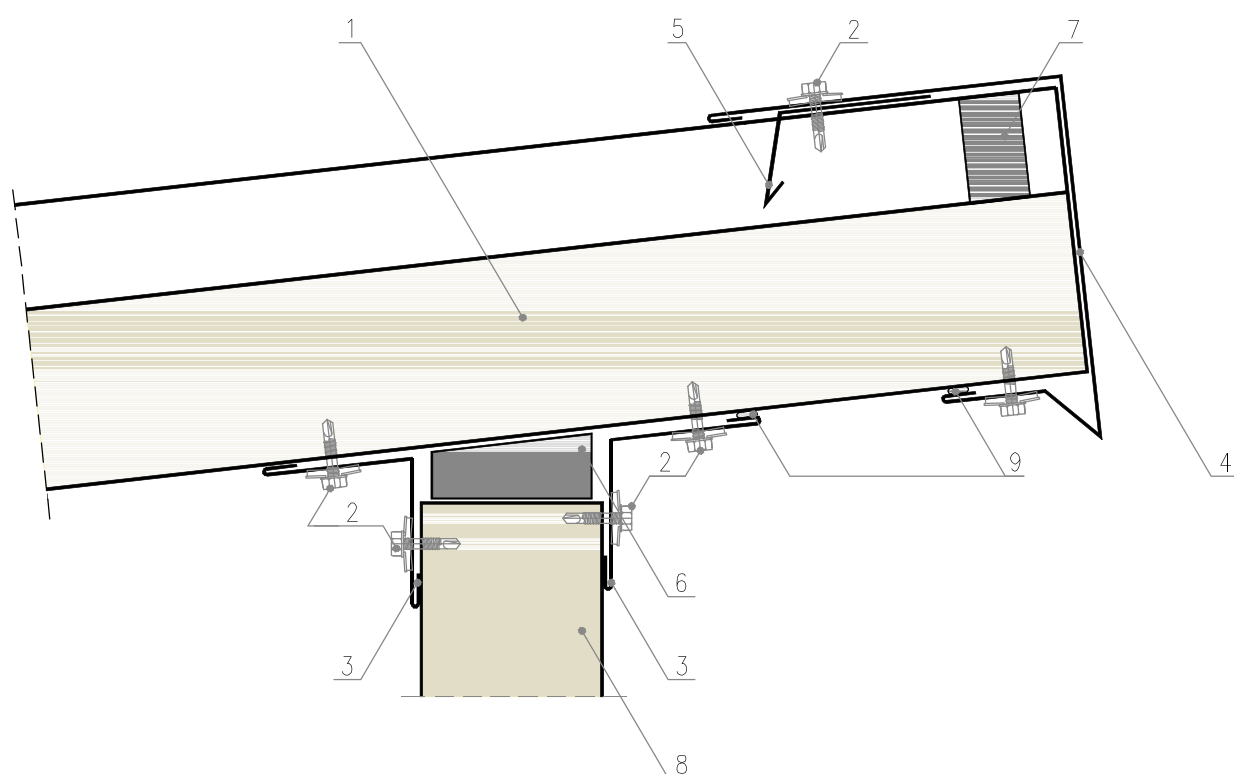
PIR-N

IzoRoof

PIR-F

MWF

EPS



1. IzoRoof PIR-N/PIR-F; MWF; EPS panel
2. Drive screw with EPDM washer
3. Ob-11 flashing
4. Ob-31 flashing
5. Ob-36 flashing
6. Polyurethane foam
7. Polyethylene sealing strip adjusted to IzoRoof panel profile
8. IzoWall/IzoGold wall panel
9. Sealant, permanently plastic

PIR-N

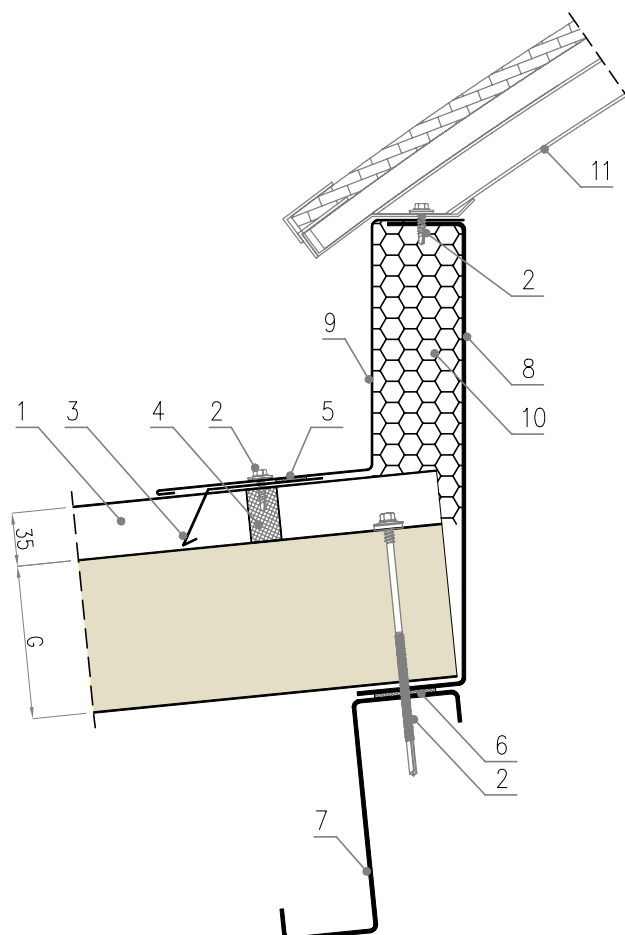
25. RIDGE SKYLIGHT

IzoRoof

PIR-F

MWF

EPS



1. IzoRoof PIR-N/PIR-F; MWF; EPS
2. Drive screw with EPDM washer
3. Ob-36 flashing
4. Polyethylene sealing strip adjusted to IzoRoof panel profile
5. Sealing butyl tape
6. PES tape
7. Purlin
8. Skylight base according to an individual project
9. Custom skylight flashing

10. The heat-insulating material of the skylight
11. Skylight

26. STRIP SKYLIGHT

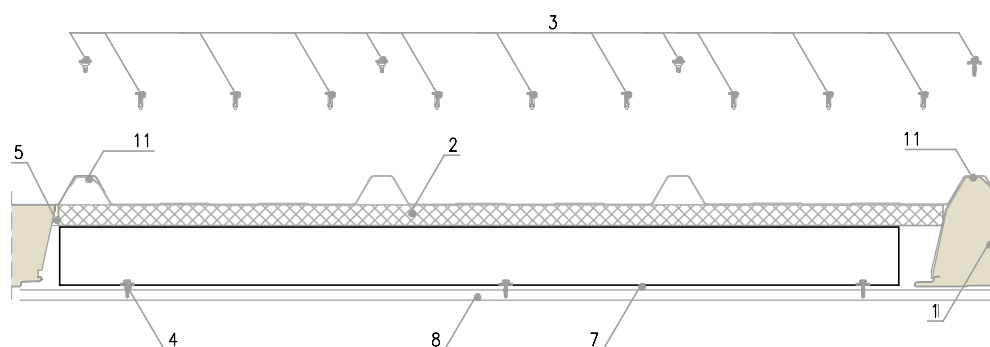
PIR-N

IzoRoof

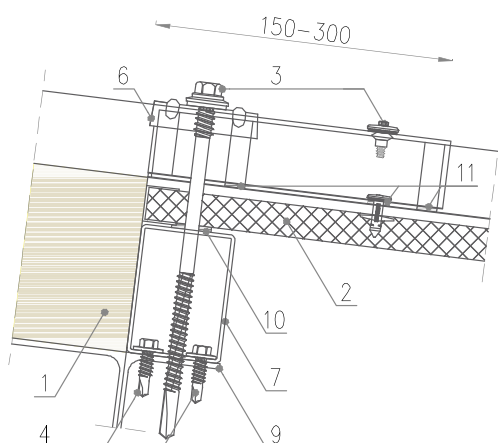
PIR-F

MWF

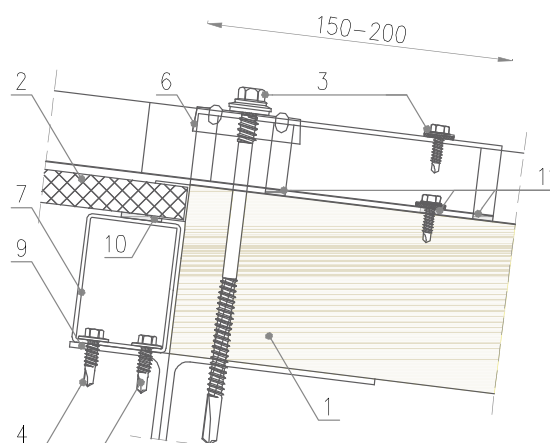
EPS



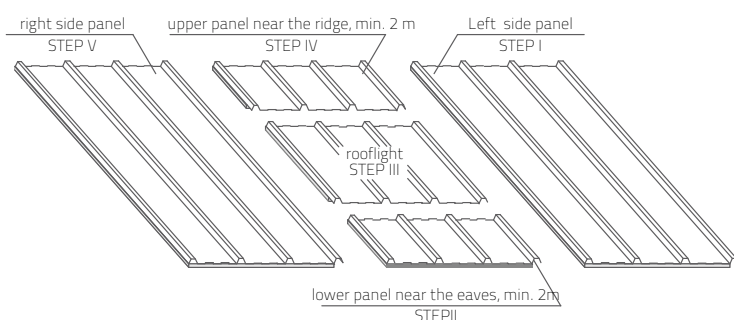
Joint on the longer side of the roof panel with skylight on the side of the roof ridge



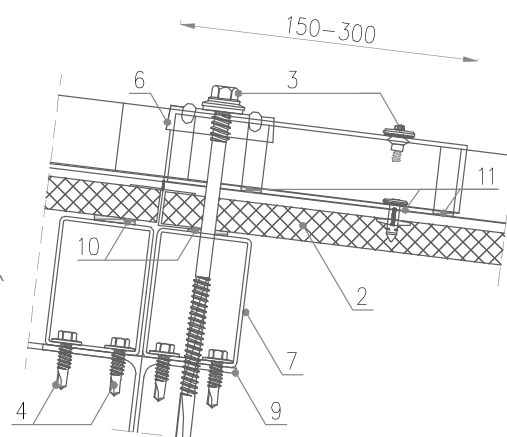
Joint on the longer side of the roof panel with skylight on the side of the eaves



Assembly direction



Longitudinal joint of the skylights



1. IzoRoof PIR-N/PIR-F; MWF; EPS panel
2. Polycarbonate panel with resin and glass facing
3. System screws and rivets - every 300 mm on the edges
4. Drive screw with EPDM washer
5. Ob-44 flashing
6. L-03 fastener

7. Spacer
8. Purlin
9. Substructure, if purlins width < 100 mm
10. Self-adhesive PES sealing tape
11. Butyl tape

27. ROOF PENETRATION

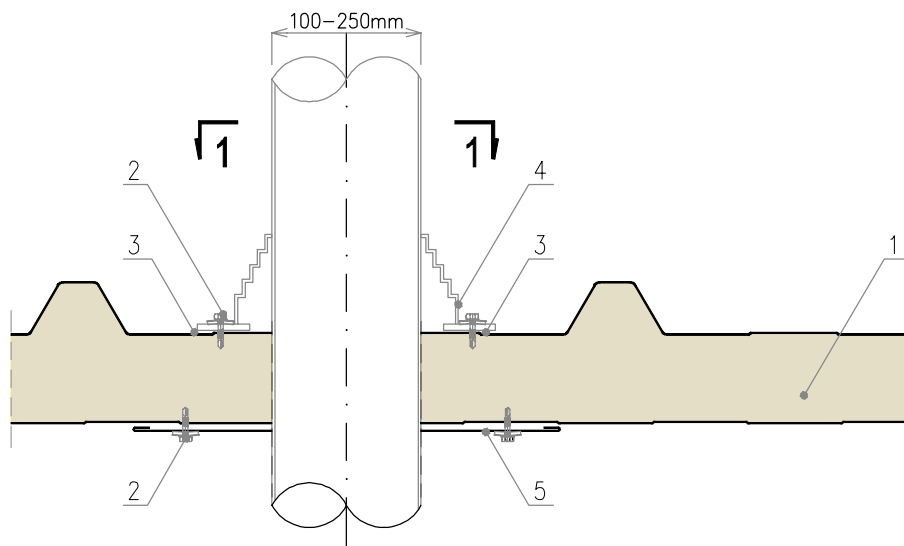
PIR-N

IzoRoof

PIR-F

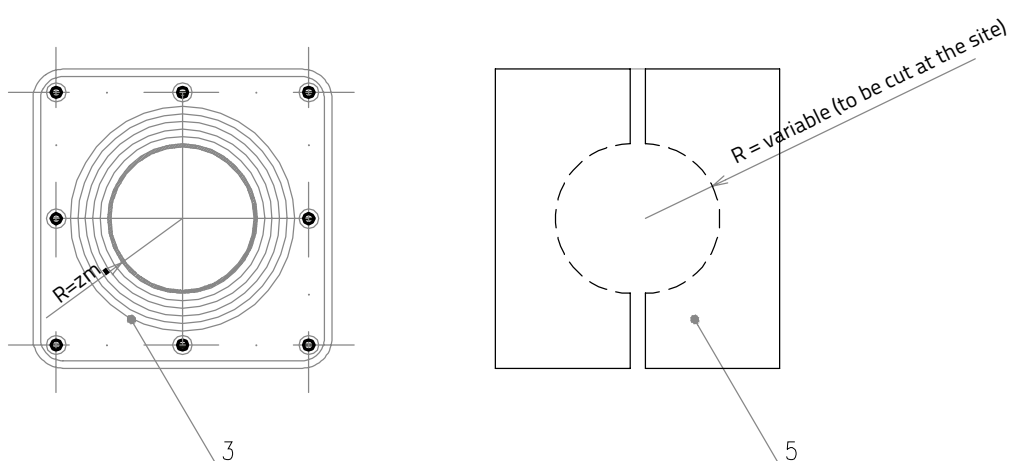
MWF

EPS



Collar size	1	2	3	4	5	6	7	8	9
Outer diameter of the pipe [mm]	5-50	44-82	6-127	75-160	108-190	125-230	150-280	175-330	154-483

Cross section 1-1



1. IzoRoof PIR-N/PIR-F; MWF; EPS panel
2. Drive screw with EPDM washer
3. Rubber based roof sealant
4. Pipe sealing collar (e.g. PIPECO / EPDM)
5. Custom Ob-00 flashing (specify parameters and section drawing)

28. ROOF MAINTENANCE SYSTEMS

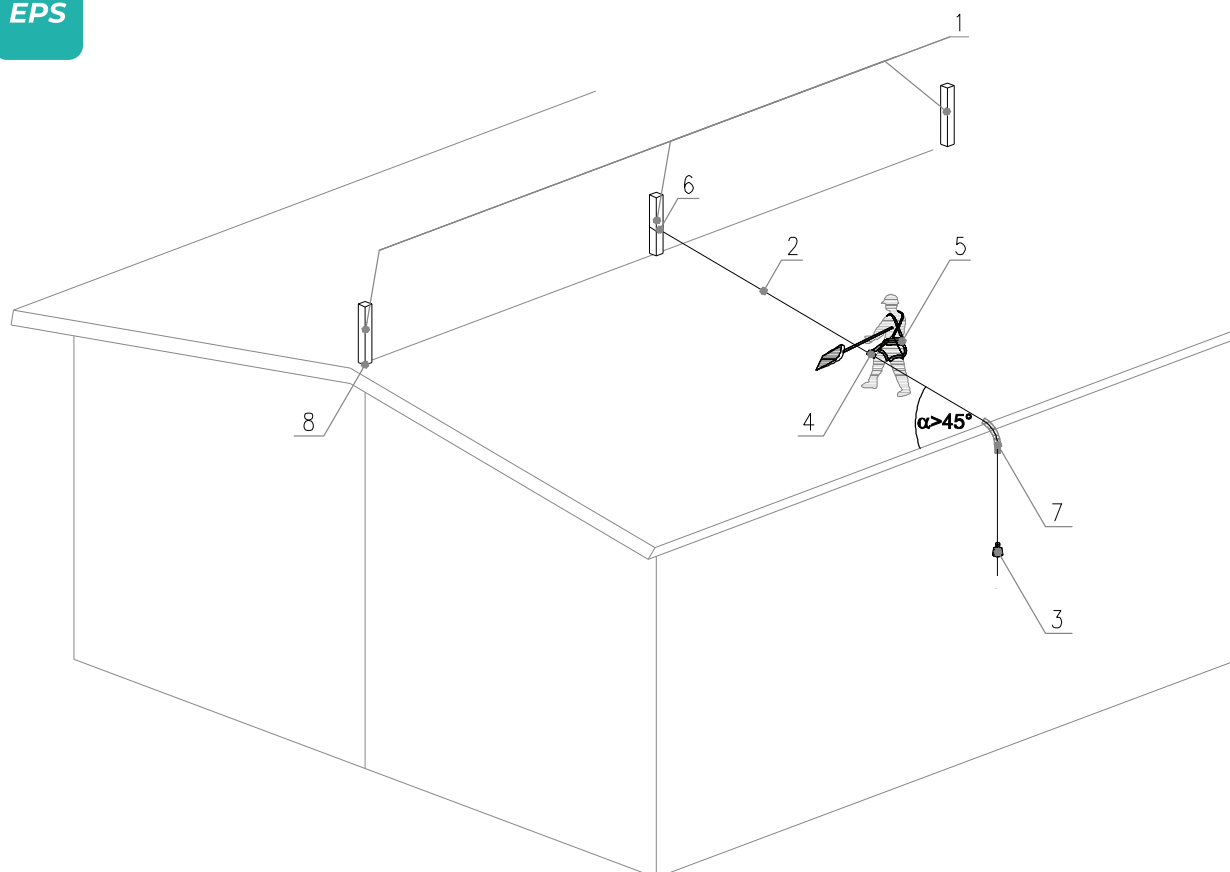
PIR-N

IzoRoof

PIR-F

MWF

EPS



1. Structural Anchors according to PN-EN 795:1999/A1:2003 – must be arranged in consultation with the Designer of the structure.
2. Rope should run at an angle not smaller than 45° to the roof edge.
3. Small deadweight guarantees constant tension of the rope and stability.
4. Fall arrester according to PN-EN 353-2:2005 (device guide should be anchored to the structural anchor and loaded with a small deadweight for stability).
5. Body harness according to PN-EN 361:2005, fall arrester mechanism should be connected to a body harness clamp.
- Removable flexible sheath.
6. In order to reduce reaction on people and structure as a result of a possible fall, use of properly selected fall arresters is recommended.
7. Removable flexible sheath.
8. Sealing of any intersection points between the structure and IzoRoof board to be carried out according to Fig. 27 – IzoRoof PIR-N/PIR-F MWF; EPS – roof pass.
9. All bearing parts of the system should be made of stainless steel according to the Polish Standards, in particular:
 - PN-EN 795:1999/A1:2003 Protection against falls from a height - Anchor devices - Requirements and testing.
 - PN-EN 363:2008 Personal fall protection equipment - Personal fall protection systems.
 - PN-EN 365:2006 Personal protective equipment against falls from a height - General requirements.

PIR-N

30. JOINING PANELS WITH GATE'S EDGE - FLASHINGS

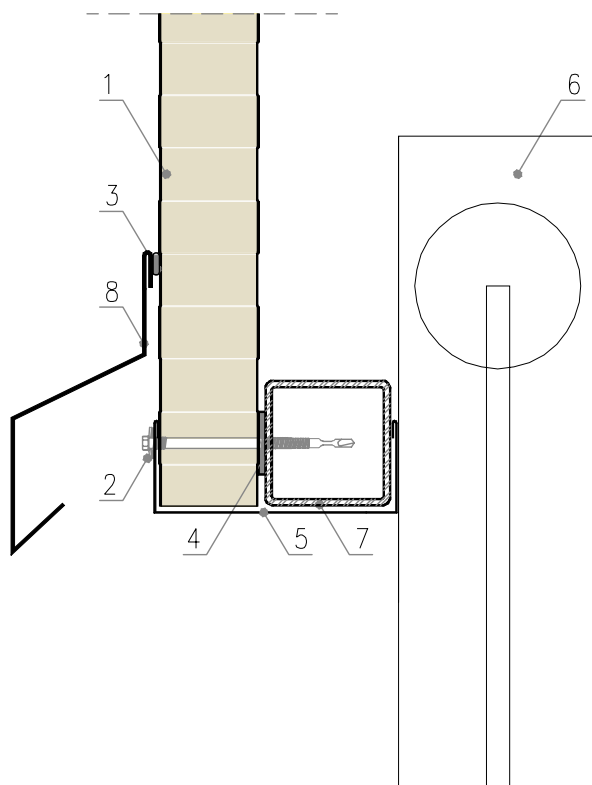
IzoWall, IzoGold

PIR-F

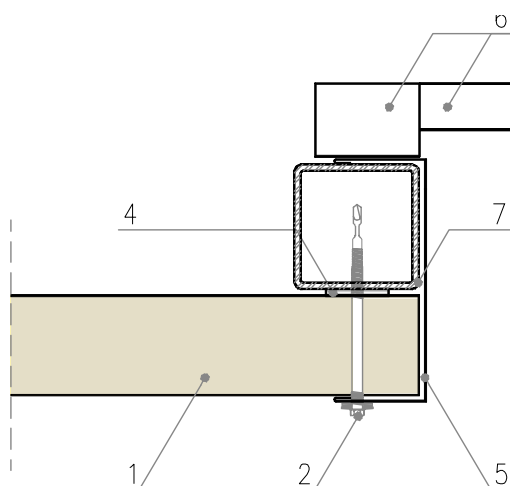
MWF

EPS

Horizontal edge of gate – flashings



Vertical edge of gate – flashings



1. IzoWall PIR-N/PIR-F; MWF; EPS and IzoGold PIR-N/PIR-F panel
2. Drive screw with EPDM washer
3. Sealant, permanently plastic
4. Self-adhesive PES sealing tape
5. Ob-20 flashing

6. Gate elements
7. Steel section, according to the design of the structure
8. Ob-07 flashing

PIR-N

PIR-F

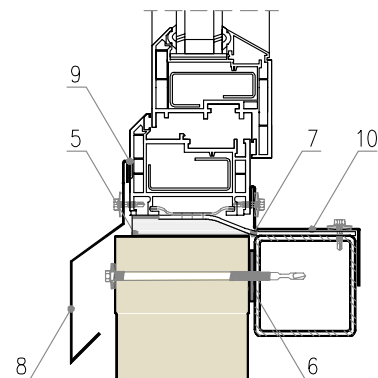
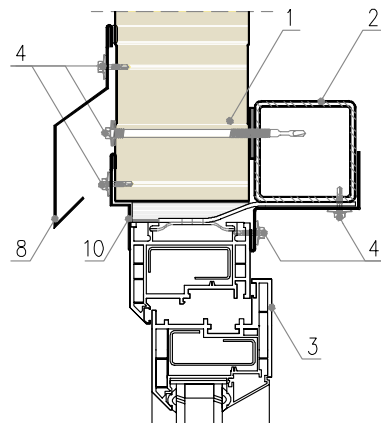
MWF

EPS

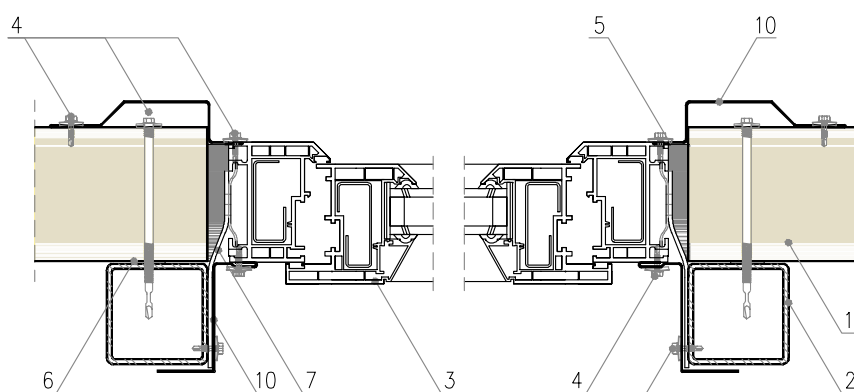
31. JOINING PANELS WITH WINDOW'S EDGE

IzoWall, IzoGold

Horizontal edge of window – flashings

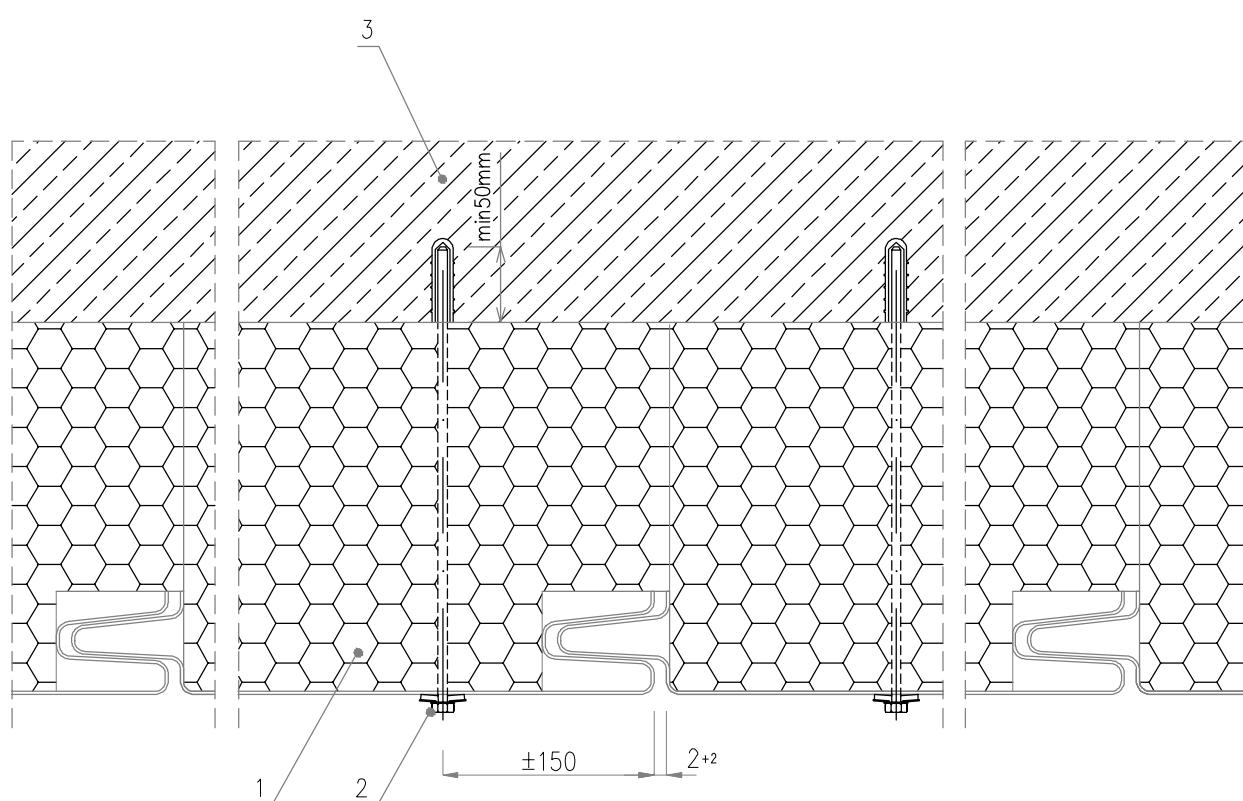


Vertical edge of window – flashings



- | | |
|--|---------------------------------|
| 1. IzoWall PIR-N/PIR-F; MWF; EPS and IzoGold PIR-N/PIR-F panel | 7. Window anchor |
| 2. Steel section, according to the design of the structure | 8. Ob-07 flashing |
| 3. Window with a handle and a fastener | 9. Sealant, permanently plastic |
| 4. Drive screw with EPDM washer | 10. Custom Ob-00 flashings |
| 5. Polyurethane foam | |
| 6. Self-adhesive PES sealing tape | |

* Zgodnie z PN-84/B-03230, dla otworów o krawędziach >300 mm, zaleca się wzmocnienie ich podkonstrukcją.



1. IzoWall EPS panel with one-side steel lining
2. Steel fastener with galvanized coating
3. Basis for panels (masonry, reinforced concrete)

PIR-N

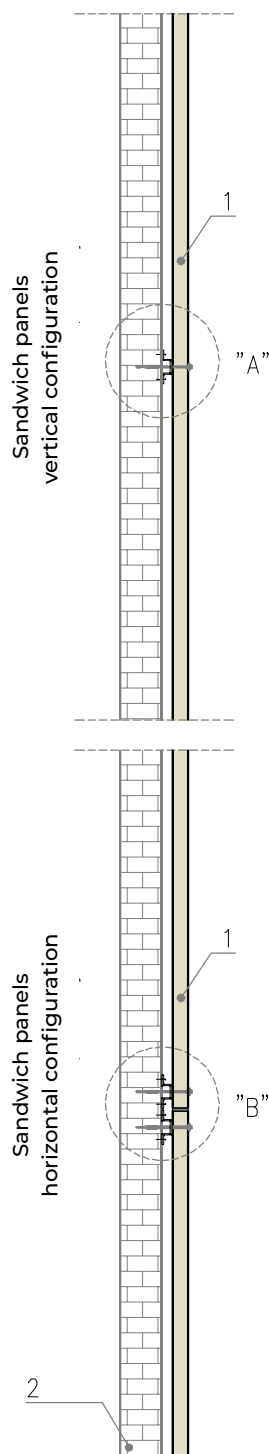
PIR-F

MWF

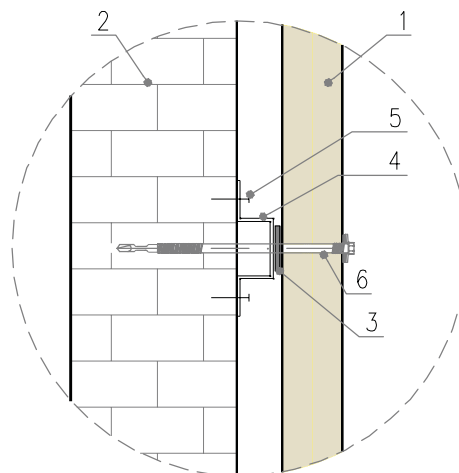
EPS

33. SANDWICH PANELS - ASSEMBLY TO WALL (MASONRY OF RAINF. CONCRETE)

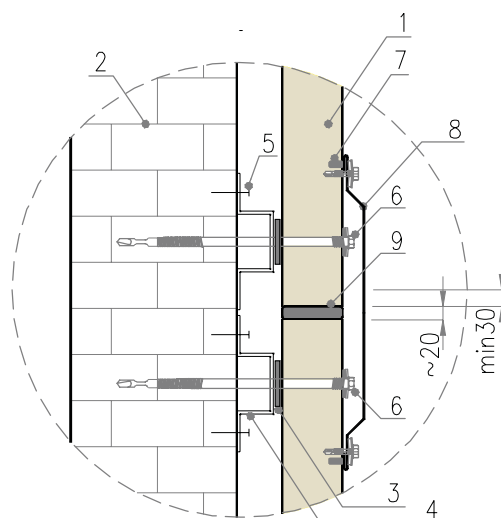
IzoPanel



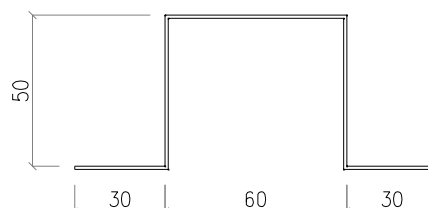
Vertical configuration - intermediate support
Detail "A"



Horizontal configuration - panel joint
Detail "B"



Custom steel section, thickness min. 1.00 mm



1. Izopanel wall panel
2. Masonry wall
3. Self-adhesive PES sealing tape
4. Custom steel section according to the drawing*
5. Steel anchor**
6. Drive screw with EPDM washer
7. Sealant, permanently plastic
8. Ob-35 flashing
9. Polyurethane foam as ~20 mm movement joint fill

* Shape and location of steel section 4 must enable proper assembly of fasteners (drive screws).

** Type and spacing of steel anchors 5 must be defined according to the loads.

PIR-N

34. ASSEMBLY OF ADDITIONAL ELEVATION ON EXISTING PANELS

IzoPanel

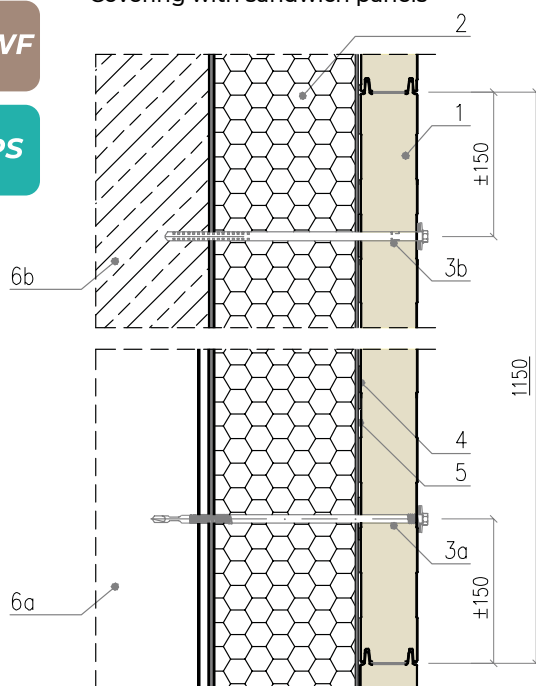
PIR-F

MWF

EPS

Variant A

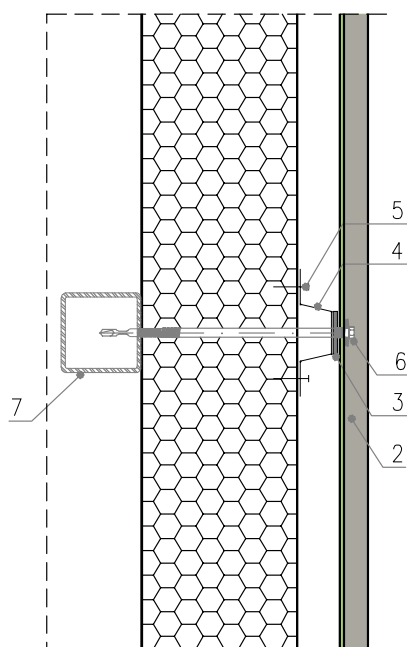
Covering with sandwich panels



1. Izopanel sandwich panel (horizontal configuration)
2. Existing light cladding panels
- 3a. Drive screw with EPDM washer*****
- 3b. Fastener to the reinforced concrete with EPDM washer*****
4. PES tape vertically along fasteners line
5. PES tape horizontally (3 rows for each panel)
- 6a. Steel column
- 6b. Reinforced concrete column

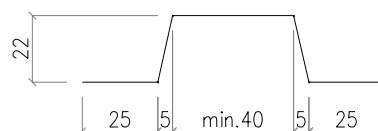
Variant B

Covering with trapezoidal/corrugated sheet



1. Izopanel sandwich panel (horizontal configuration)
2. Trapezoidal/corrugated sheet*
3. Self-adhesive PES sealing tape
4. Custom steel section according to the drawing**
5. Galvanized self-drilling fastener 4.8 x 20 mm***
6. Drive screw with EPDM washer*****
7. Steel section according to the design of the structure

Custom steel section of sheet 0.88 mm



* Additional elevation assembly should have configuration compatible with existing one.

** Shape and location of steel section 5 must enable proper assembly of fasteners (drive screws).

It should be installed close to the line of existing panels fasteners.

*** Fasteners 6 should be installed interlocked, every approx. 300 mm.

**** In order to avoid collision, fasteners 7 should be placed with offset from the existing fasteners.

Fasteners 7 are coated in covering colour.

***** In case of existing panels with exposed fasteners, dismantling project should be developed so as to avoid a risk of the panel detachment from the support.

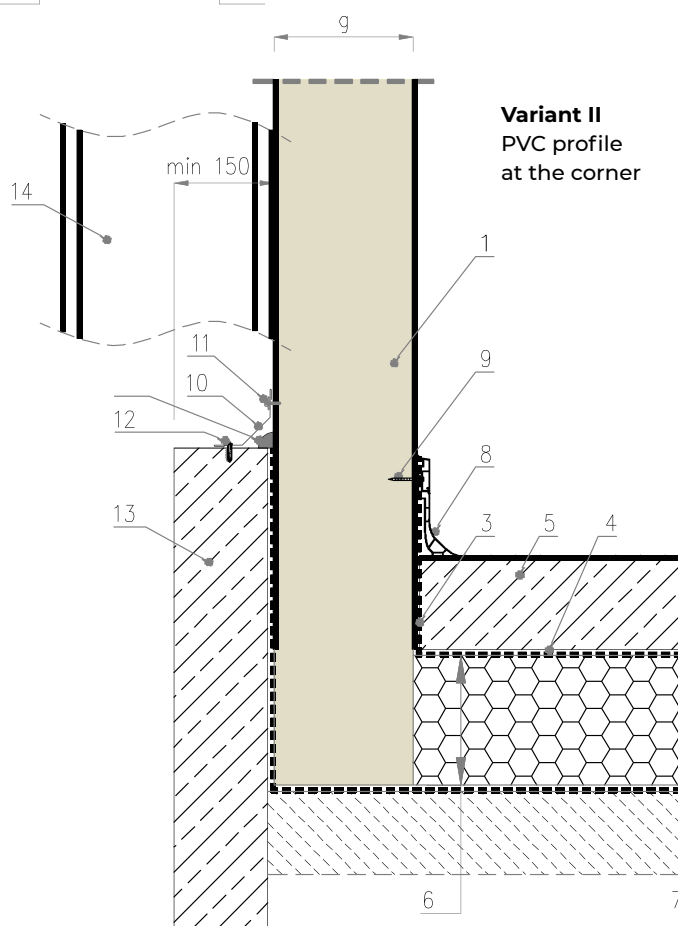
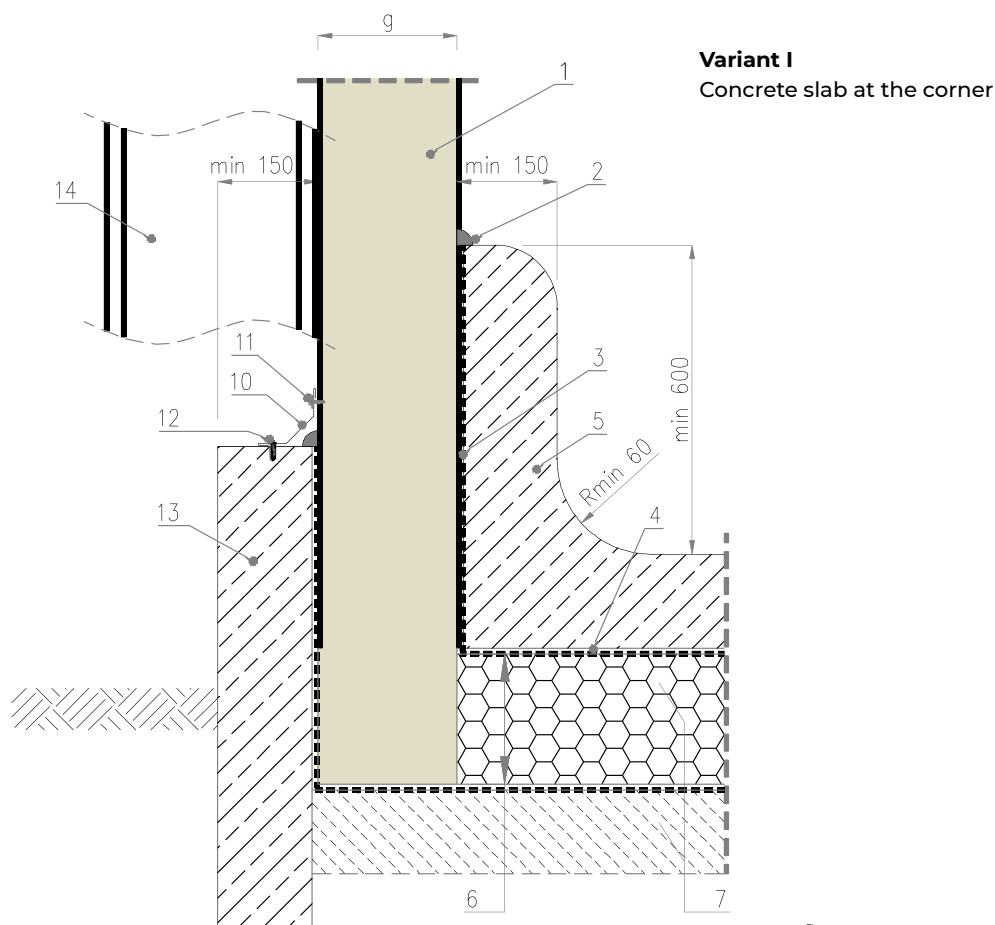
Connectors 3a and 3 b serve as fasteners to both existing and new panels.

PIR-N

35. JOINT OF COLD STORAGE PANELS WITH CONCRETE AND PVC CORNER

IzoCold

PIR-F



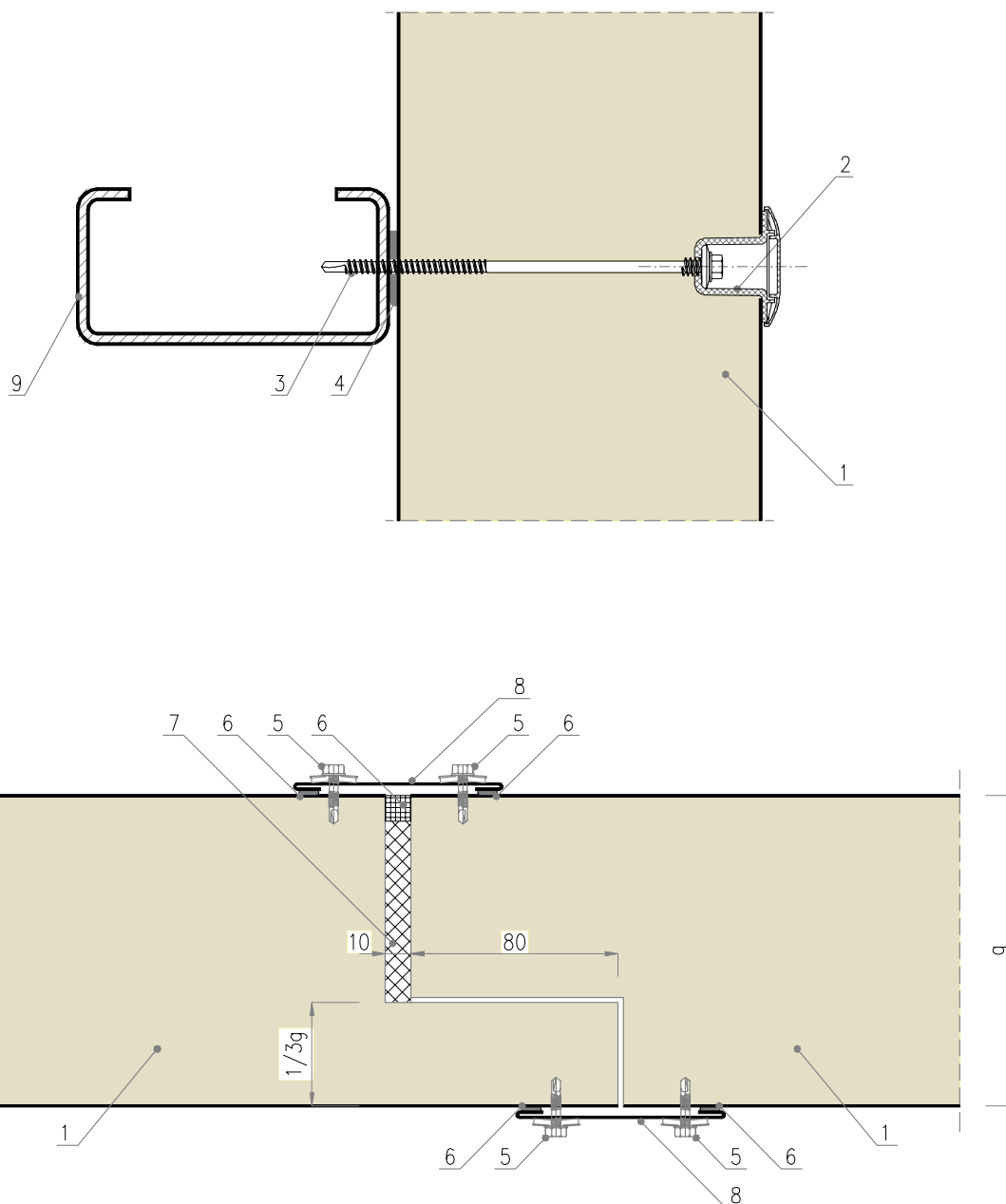
1. IzoCold PIR-N/PIR-F panel
2. Sealant, permanently plastic
3. Vertical dampproof course
4. Horizontal dampproof course
5. Concrete floor
6. Remove the cladding to the height of the thermal insulation
7. Thermal insulation according to the design
8. PVC profile at the corner
9. Stainless steel self-drilling screw with washer
10. Ob-15 flashing
11. Drive screw with EPDM washer (optionally leakproof rivet 4.0 x 10 mm)
12. Nail plug screw
13. Ground beam
14. Steel section according to the design

PIR-N

36. FASTENING COLD STORAGE PANELS WITH THE USE OF LAX FASTENERS

PIR-F

IzoCold, joining of cold storage panels along their length



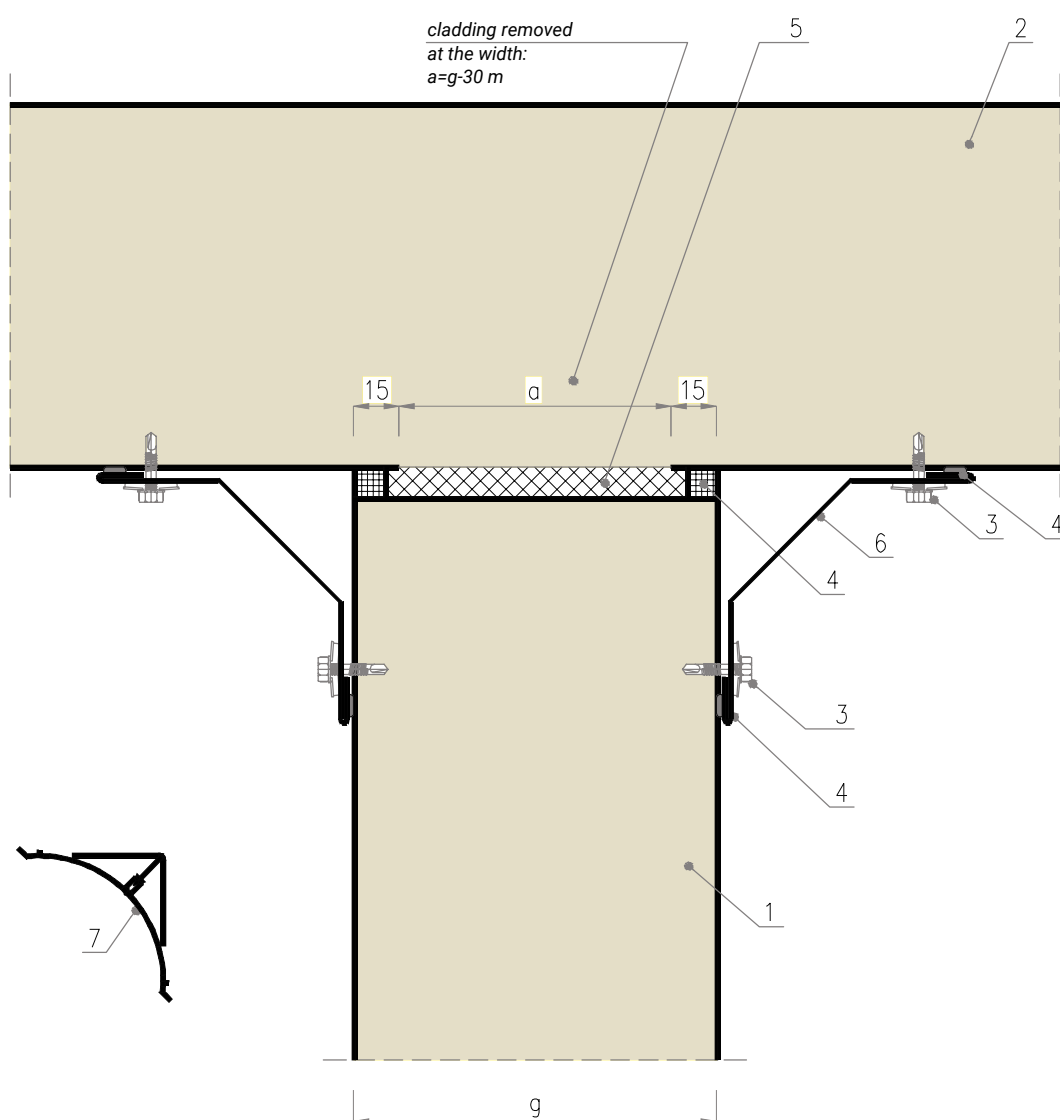
1. IzoCold panel
2. LAX fastener for thermal bridge reduction (bush + EPDM seal + cap)
3. Drive screw with EPDM washer for cold storage panels fastening
4. Self-adhesive PES sealing tape
5. Drive screw with EPDM washer for flashing fastening
6. Sealant, permanently plastic
7. Polyurethane foam
8. Ob-23 flashing
9. Steel section according to the design of the structure

PIR-N

37. JOINT OF EXTERNAL WALL OR CEILING WITH PARTITION WALL

PIR-F

IzoCold



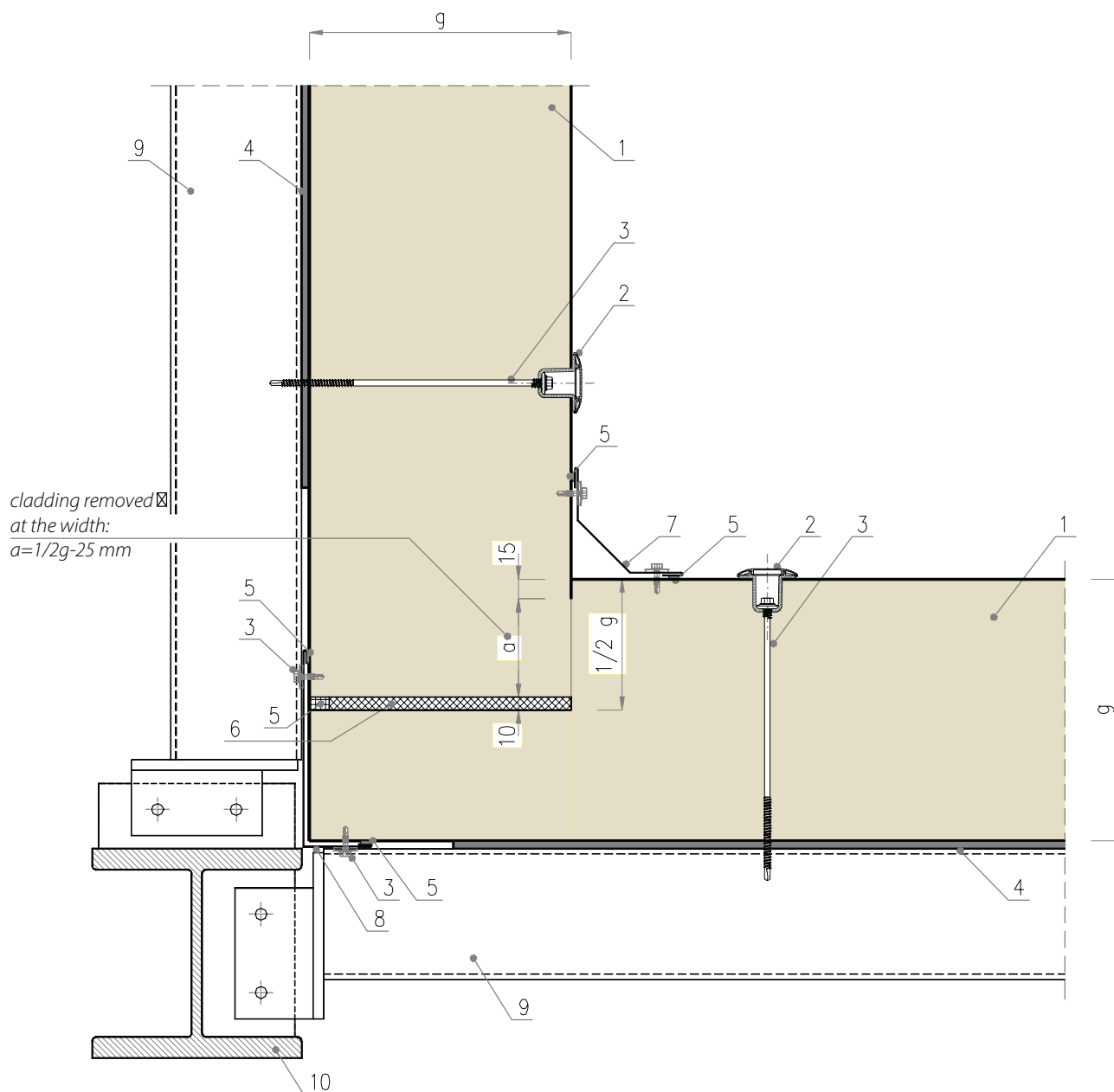
1. IzoCold PIR-N/PIR-F panel - partition wall
2. IzoCold PIR-N/PIR-F panel - external wall or ceiling
3. Drive screw with EPDM washer (optionally leakproof rivet 4.0 x 10 mm)
4. Sealant, permanently plastic
5. Polyurethane foam
6. Ob-15 flashing
7. Optionally PVC corner profile (instead of Ob-15 flashing)

PIR-N

38. FASTENING COLD STORAGE PANELS IN THE CORNER

IzoCold

PIR-F



1. IzoCold PIR-N/PIR-F panel
2. LAX fastener for thermal bridge reduction (bush + EPDM seal + plug)
3. Drive screw with EPDM washer
4. Self-adhesive PES sealing tape
5. Sealant, permanently plastic
6. Polyurethane foam
7. Ob-15 flashing
8. Custom Ob-00 flashing (specify parameters and section drawing)
9. Steel purlin according to the design of the structure
10. Steel column according to the design of the structure

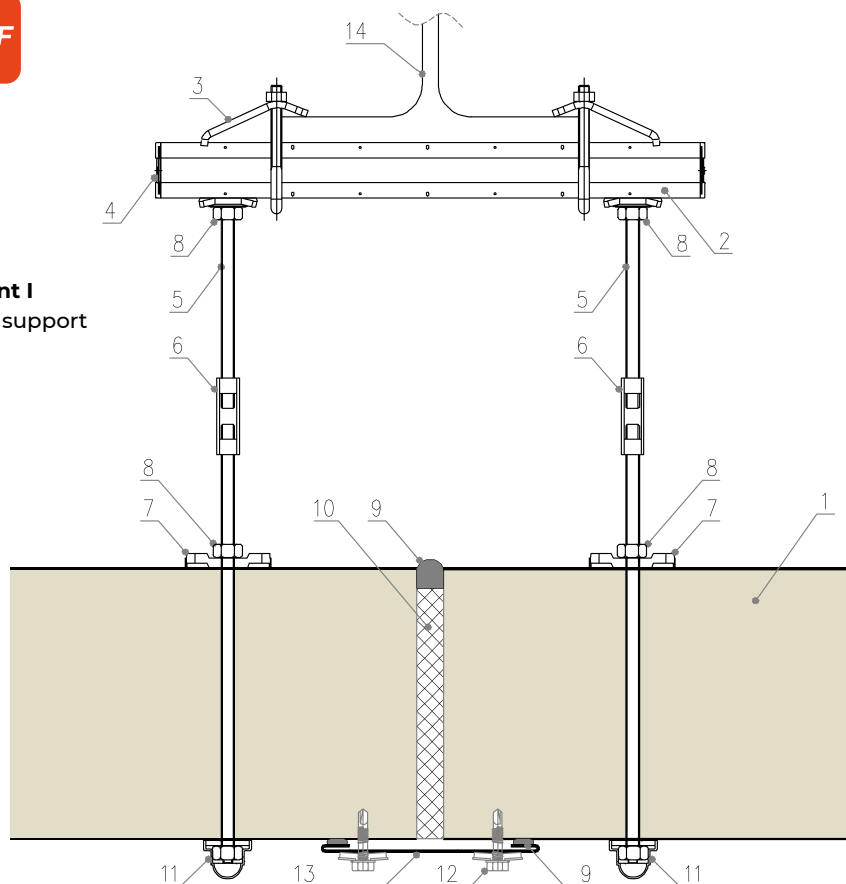
39. HILTI SYSTEM

PIR-N

IzoCold, suspending cold storage panels with the use of HILTI system

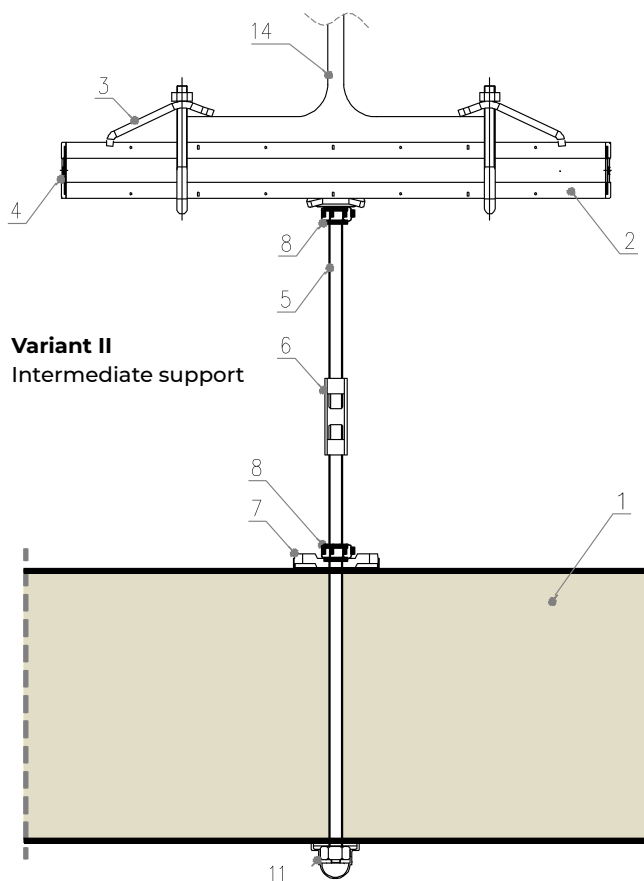
PIR-F

Variant I
Edge support



1. IzoCold PIR-N/PIR-F panel
2. System splint, type MQT-41
3. System clamp, type MQT-21-41
4. System plug, type MQZ-E41
5. Threaded steel bar M10, every max. 1.5 m
6. Turnbuckle
7. System splint, type MQZ-L11
8. M10 nut
9. Sealant, permanently plastic
10. Polyurethane foam
11. M10 nut with protective cap
12. Drive screw with EPDM washer
(optionally leakproof rivet, 4.0 x 10 mm)
13. Ob-23 flashing
14. Steel section according to the design of the structure

Variant II
Intermediate support



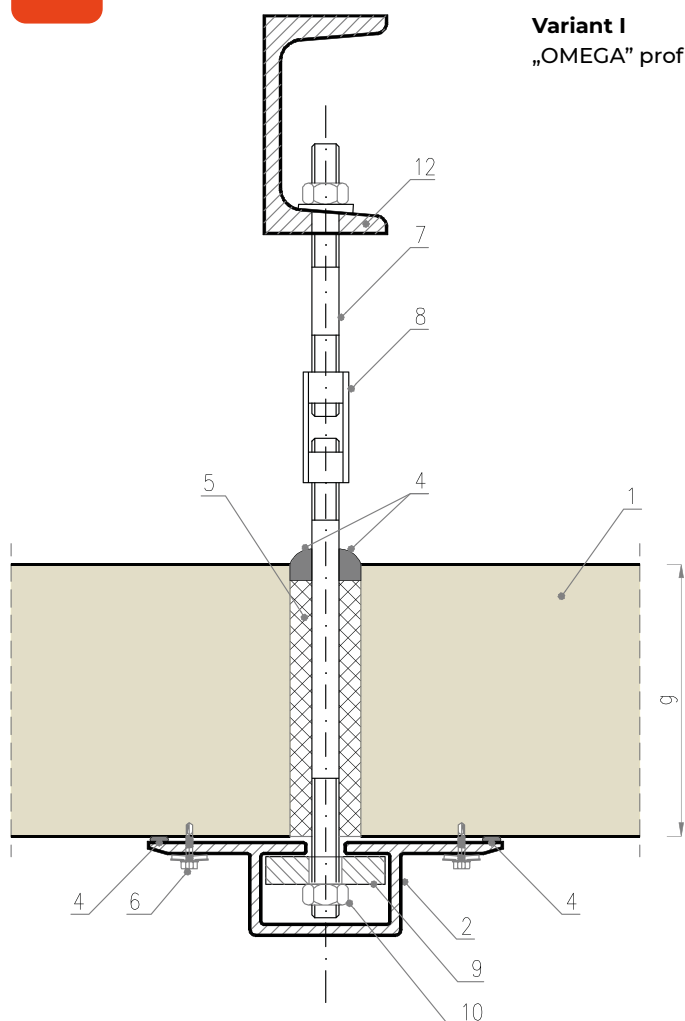
40. OMEGA PROFILE

PIR-N

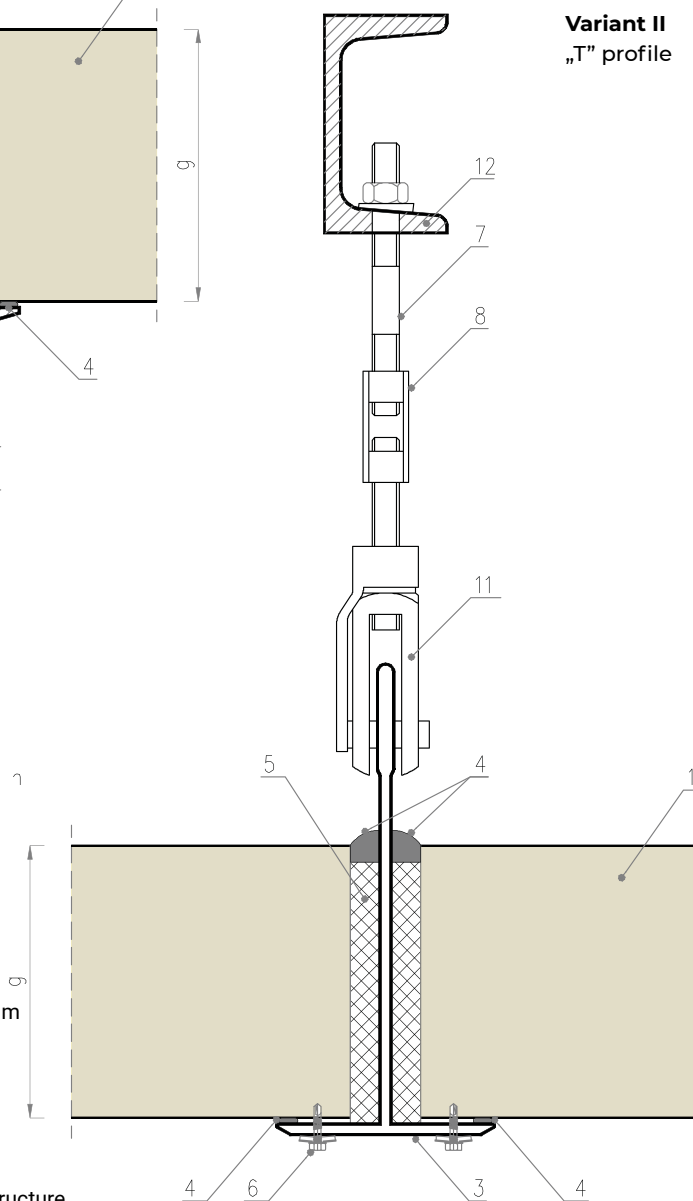
IzoCold, suspending panels with the use of "T" and "OMEGA" profiles

PIR-F

Variant I
„OMEGA” profile



Variant II
„T” profile



1. IzoCold PIR-N/PIR-F panel
2. „OMEGA” system profile (polyester)
3. „T” system profile (aluminium)
4. Sealant, permanently plastic
5. Polyurethane foam
6. Drive screw with EPDM washer
(optionally leakproof rivet, 4.0 x 10 mm)
7. Threaded steel bar M10 or M12, every max. 1.5 m
8. Turnbuckle
9. Spacer
10. M10 or M12 nut
11. System clamp (hanger)
12. Steel section according to the design of the structure

PIR-N

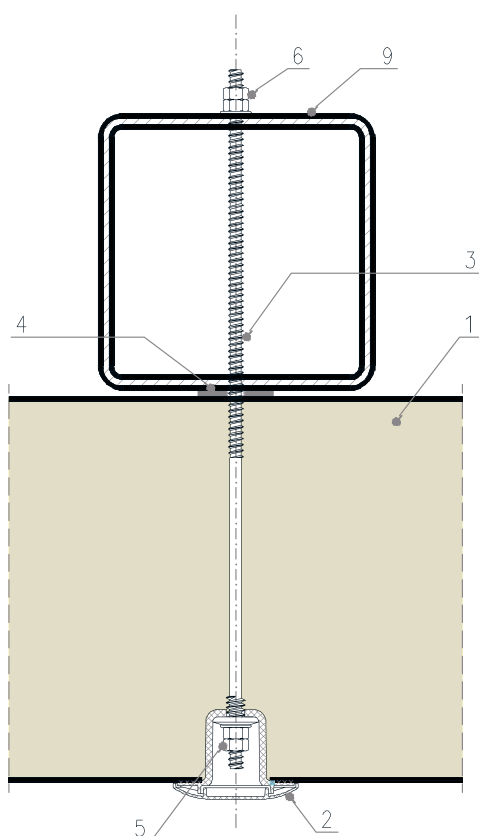
41. SUSPENDING PANELS WITH THE USE OF LAX SYSTEM FASTENERS

IzoCold

PIR-F

Variant I

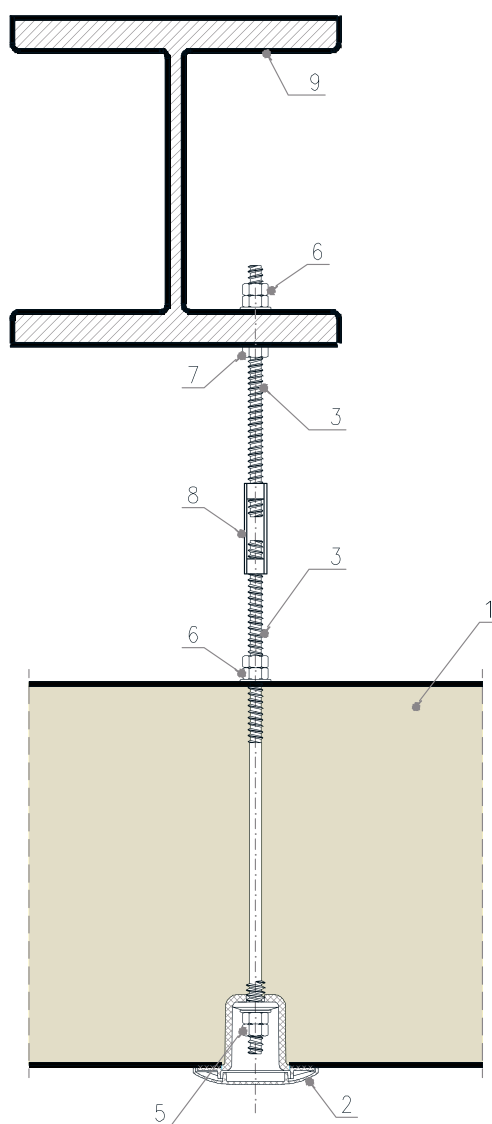
suspending on threaded steel bars directly to the bottom of steel section

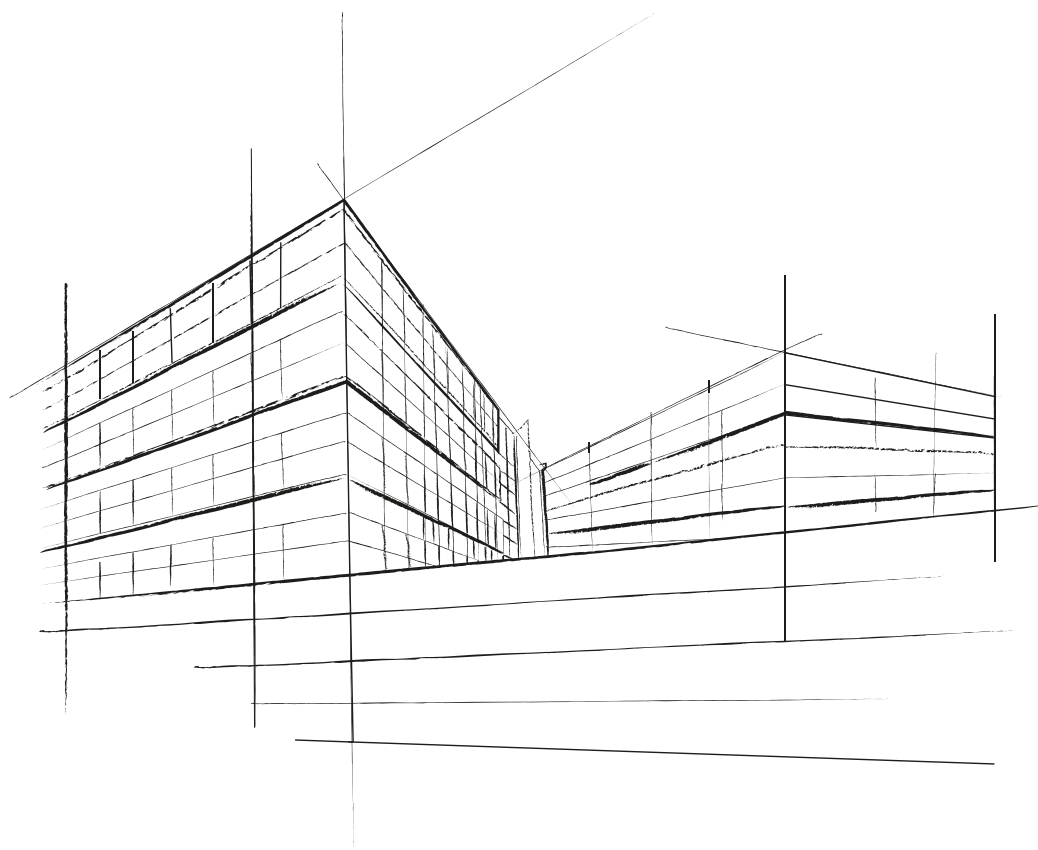


1. IzoCold PIR-N/PIR-F panel
2. LAX fastener for thermal bridge reduction (bush + EPDM seal + plug)
3. Threaded bar - diameter and spacing according to the design
4. Self-adhesive PES sealing tape
5. Nut + locknut, EPDM washer + steel washer
6. Nut + locknut + steel washer
7. Nut + steel washer
8. Turnbuckle
9. Steel purlin or bottom trussed rafter strip according to the design of the structure

Variant II

suspending on threaded steel bars with maintaining space above the panels





IZO.
PANEL

www.izopanel.pl

tel. +48 58 340 17 17

bok@izopanel.pl

10/2023

Due to dynamic development of the company and possible technical changes, Izopanel sp. z o.o. reserves the right to introduce changes within this catalogue without notice. This catalogue does not constitute an offer according to art. 66 and subsequent articles of the Civil Code. Declarations of Performance Characteristics and Technical Approvals (available at our website) are (unlike this document given for reference only) are the only documents to officially define and specify the declared value ranges for Performance Characteristics of the products presented. Specifications valid as of 10/2023. The most recent catalogue version in English is available at our website. Our Strength Properties Tables shall not release the designers of structures from the obligation of carrying out verifiable statistical calculations, according to the Building Code.